

The right protection
for your high-performance
installations

MOULDED CASE CIRCUIT BREAKERS
FROM 16 A TO 1600 A

DPX³ 125 HP/160 HP/250 HP/630 & 1600



#LegrandImprovingLives

 **legrand**®

DPX³

RELIABLE PROTECTION AND HIGH PERFORMANCE UP TO 1600 A

The new DPX³ 125 HP, 160 HP and 250 HP MCCBs extend the advantages of the DPX³ range from 16 A to 1600 A. Not only do DPX³ HP MCCBs provide reliable, accurate protection, they also offer numerous benefits for your low voltage distribution boards.

The wide choice of characteristics and versions meets the requirements of all types of installation. The new configurable electronic protection units as well as the different selectivity techniques available help ensure optimum continuity of service. The high limitation capacity in the event of short-circuits ensures a longer service life for your installation. Operation and maintenance are made easy by the comprehensive range of electrical and mechanical auxiliaries. Perfect synergy with Legrand XL³ DO enclosures simplifies implementation. Numerous accessories are available to enable adaptation to any board configuration.





Wide choice, high performance and safety

High-performance circuit breakers for your projects	2
Different versions for all types of installation.....	4
Electronic protection configurable to your requirements	6
Integrated measurement and optimum continuity of service.....	10
CX ³ EMS a universal innovative system for energy management	12

Safety, simplicity and speed of installation

Control and signalling auxiliaries that are easy to install and wire up	14
Supply inversion and motor operators	16
Connection accessories for multiple configurations.....	18
Plug-in and draw-out versions for perfect continuity of service.....	20
XL Pro ³ software makes configuring your enclosures simplicity itself.....	22

Catalogues pages

Find all our catalogue numbers and details of their settings	24
--	----

DPX³

High-performance circuit breakers for your projects



With DPX³ 125 HP, 160 HP and 250 HP, which have been added to the DPX³ 630 and 1600 MCCBs and isolating switches, Legrand offers a solution ideally suited to the performance requirements of all your installations for current ratings from 16 A to 1600 A and breaking capacities up to 100 kA.

QUALITY, RELIABILITY AND
STRENGTH ARE THE MAIN
ATTRIBUTES OF THIS NEW RANGE



DPX³ 125 HP



DPX³ 160 HP



DPX³ 250 HP

EFFECTIVE PROTECTION

These products are reliable and rugged, easy to use and install. There is a choice of four sizes, available with 3 and 4 poles, in fixed or draw-out versions and with a choice of thermal-magnetic or electronic protection depending on the desired service level. This offer also includes a range of control and signalling units and connection accessories for easy integration in any electrical installation, regardless of configuration.

- MOUNTING ON PLATE
- SUITABLE FOR ALL TYPES OF SITE IN THE SERVICE SECTOR AND INDUSTRY
- IN: 16 A → 1600 A
- ICU: 36 kA → 100 kA (380/415 V)
- THERMAL-MAGNETIC PROTECTION OR ELECTRONIC PROTECTION (FOR DPX³ 250 HP, DPX³ 630 AND 1600)

A LONGER SERVICE LIFE FOR YOUR INSTALLATIONS

The "Active breaking capacity" patented system integrated in the new 70 kA and 100 kA DPX³ HP MCCBs significantly reduces the current magnitude and dissipated energy in the event of short-circuits, thus increasing the limitation capacity of devices. Improved limitation capacity means less overheating in the cables, fewer mechanical effects, less electromagnetic disturbance, and therefore a longer service life for your installation over time.



SIZES AVAILABLE

Four circuit breaker sizes available with breaking capacities from 36 to 100 kA over the whole range, which makes them suitable for all types of site in the large service sector and industry.

	In	16	25	40	63	80	100	125	160	200	250	320	400	500	630	800	1000	1250	1600
Breaking capacity	100 kA																		
	70 kA																		
	50 kA																		
	36 kA																		

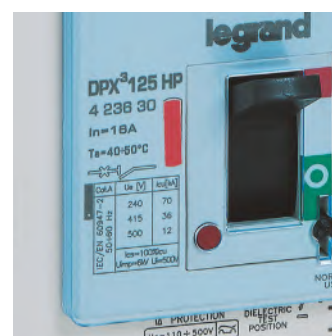
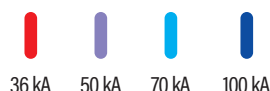


DPX³ 630

DPX³ 1600

EASY IDENTIFICATION

Easy identification of the breaking capacity thanks to the colour-coded marking on the front of the equipment:



DPX³

Different versions for all types of installation



THE CHOICE BETWEEN THE DIFFERENT TYPES OF PROTECTION IS MADE MAINLY ON THE BASIS OF PERFORMANCE AND THE DESIRED LEVEL OF SELECTIVITY.

The DPX³ range offers a wide choice of versions to meet all types of requirement depending on the site.

- Thermal-magnetic, electronic or magnetic-only protection
- With or without integrated residual current protection
- With or without integrated measurement function
- Fixed, plug-in or draw-out version



TRIP-FREE SWITCHES

The 4 device sizes are also produced in a DPX³-I 125, 160, 250 HP and DPX³-I 630 and 1600 trip-free switch version for installations that only require on-load breaking and separation of circuits. All the control and signalling units and connection accessories are common to those of the corresponding circuit breakers.



DPX³-I 125 HP
Or DPX³-I 160 HP
trip-free switch

DPX³-I 250 HP
trip-free switch

MAGNETIC-ONLY CIRCUIT BREAKERS

Magnetic-only circuit breakers, available throughout the range from 6.3 A to 1000 A, are particularly suitable for protecting three-phase motors. Thanks to their high limitation capacity, the new DPX³ 125 and 250 HP, combined with CTX³ contactors, can provide type 2 coordination (according to IEC 60947-4-1), and thus provide better continuity of service.



DPX³ 250 HP magnetic-only

OPTIMISED INTEGRATION

The dimensions of 4P DPX³ 125 HP, 160 HP or 250 HP circuit breakers with or without integrated residual current protection are exactly the same (within the same family), which saves a significant amount of space in enclosures and gives the ability to upgrade the installation from a standard version to a version with integrated residual current protection without changing the wiring or fixing plates.



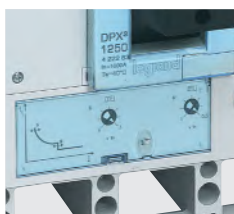
4P DPX³ 250 HP circuit breakers without residual current protection

4P DPX³ 250 HP circuit breakers with residual current protection

A WIDE CHOICE OF VERSIONS

		DPX ³ 125 HP	DPX ³ 160 HP	DPX ³ 250 HP	DPX ³ 630	DPX ³ 1600
Number of poles	3 P	■	■	■	■	■
	4 P	■	■	■	■	■
	3 P + N/2	-	-	-	■	■
Version	Fixed	■	■	■	■	■
	Plug-in	-	-	■	■	-
	Draw-out	-	-	■	■	■
Protection	Thermal-magnetic	■	■	■	■	■
	S1 electronic	-	-	■	■	■
	S10 electronic	-	-	■	■	■
	Residual current protection	Integrated	Integrated	integrated	Add-on module	Add-on module
	Magnetic-only	-	-	■	■	■
Integrated measurement		-	-	■(1)	■(1)	■(1)

POSSIBLE SETTINGS



Thermal-magnetic version - thumbwheel settings⁽²⁾



S1 electronic version - thumbwheel settings⁽²⁾



S10 electronic version with LCD screen⁽²⁾

(1) With S10 version.

(2) The photos correspond to a DPX³ 1600 MCCB. The position of the settings on the front face may vary according to the size of the circuit breaker.

DPX³

Electronic protection configurable to your requirements



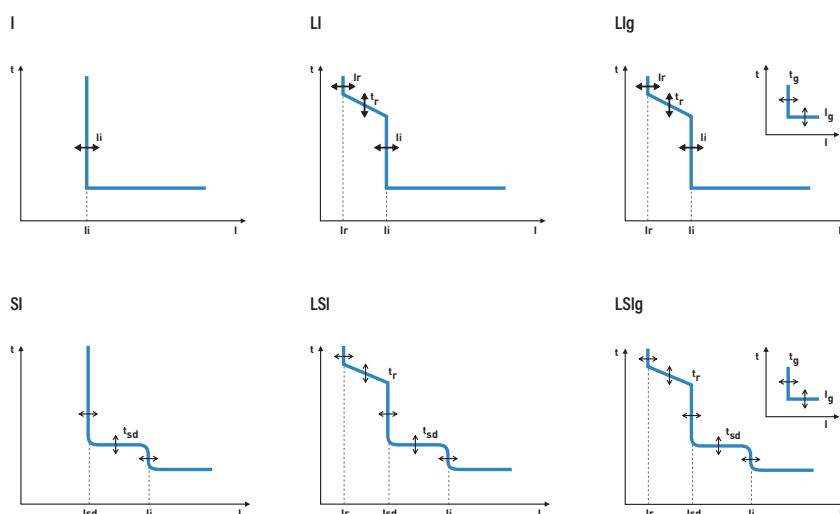
Electronic DPX³ circuit breakers equipped with S10 protection units are fully configurable. They can be used to adapt settings as closely as possible to the requirements of your installation, either by enabling/disabling the different protection devices (tripping time delays and currents), or by altering the different trip thresholds. The tripping curve is therefore fully customised to suit the real-life conditions of each project.



CUSTOMISABLE SETTINGS

A single circuit breaker can operate according to different tripping curves depending on the settings.

- I_r** Long time protection against overloads
- t_r** Long time protection delay
- I_{sd}** Short time protection against short circuits
- t_{sd}** Short time protection delay
- I_i** Instantaneous protection against high-intensity short-circuits
- I_g** Earth fault current
- t_g** Earth fault current protection delay
- I_N** Neutral protection



TWO OPTIONS FOR CONFIGURING SETTINGS

Locally on the circuit breaker or on a PC, smartphone or tablet.



Settings	DPX ³ 250 HP, DPX ³ 630 and DPX ³ 1600 with S10 electronic protection	
	Local on the device	Via the software or app
I_r	0.2 to 1 x I _n , in steps of 1 A	0.2 to 1 x I _n - OFF, in steps of 1 A
t_d	DPX ³ 250 HP: 3 - 5 - 10 - 15 s DPX ³ 630 and 1600: 3 to 30 s (7 steps)	DPX ³ 250 HP: 3 to 15 s, in steps of 40 ms DPX ³ 630 and 1600: 3 to 30 s, in steps of 40 ms
I_{sd}	1.5 to 3 x I _r , in steps of 0.5 x I _r 3 to 10 x I _r , in steps of I _r	1.5 x I _r to 10 x I _n - OFF, in steps of 1 A
t_{sd} (t=k, I₂t=k)	40 to 480 ms (7 steps)	40 to 480 ms, in steps of 40 ms
I_i (t=k)	-	2 to 15 x I _n - OFF, in steps of 1 A
I_g	0.2 to 1 x I _n , in steps of 0.1 x I _n	0.2 to 1 x I _n - OFF, in steps of 0.1 x I _n
t_g (t=k, I₂t=k)	80 to 480 ms and 1 s (6 steps)	80 ms to 1 s, in steps of 40 ms

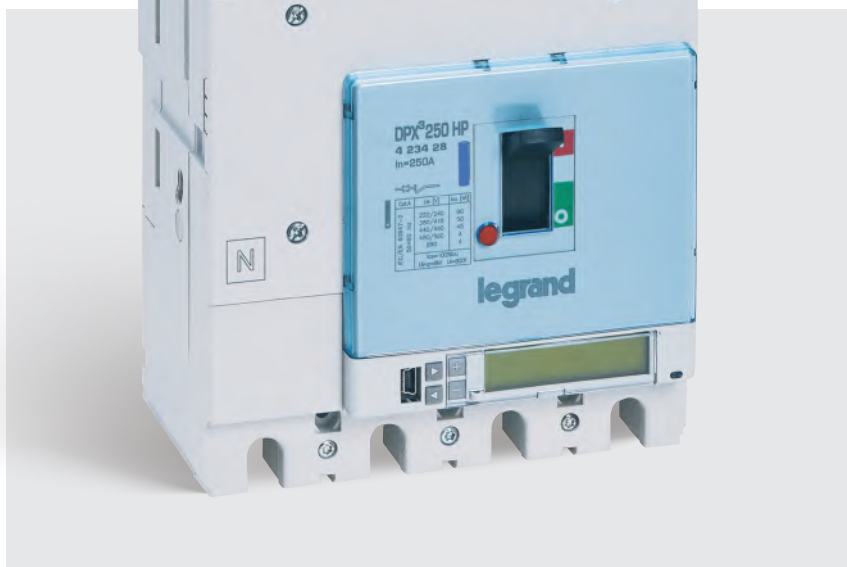
INTERNAL BATTERY

Thanks to the internal battery, the protection unit can be set even if the circuit breaker is de-energised. Tests and troubleshooting can be done directly via the circuit breaker LCD screens.



DPX³

Electronic protection configurable to your requirements



CONFIGURING SETTINGS VIA THE SOFTWARE OR THE APPS

There are several ways to configure the various settings: directly on the protection units (using the +/- and >/< buttons on the front face), on a PC with Power Control Station software installed, or on a tablet or smartphone via the EnerUp+ Project app. Power Control Station software for PC and the EnerUp+ Project app for smartphone/tablet can be used to exchange data with the DPX³ S10 protection unit.

The software and app can be used to:

- monitor the status of the circuit breaker
- display information (firmware and device versions, alarms, measurements, parameters, fault log, settings)
- configure the different protection devices⁽¹⁾
- update the protection unit firmware⁽²⁾
- generate reports based on the data stored and read by the protection unit⁽¹⁾

- run diagnostic tests
- upload data linked to your profile and installation to the Cloud (with the EnerUp + Project app only)

(1) With the Power Control Station software only

(2) For Legrand technical support via the Power Control Station software only

CONFIGURATION ON A PC



Start menu

Displays the I1, I2, I3, IN and Ig values, circuit breaker type and status, breaking capacity, number of poles, neutral position (right/left), temperature and trip threshold in the event of overheating.

Configuration menu

For setting the various circuit breaker parameters according to the required tripping curves (time/current and earth fault current).

CONTROL VIA A SMARTPHONE OR TABLET



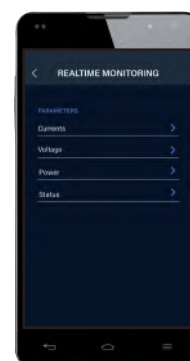
Start menu

For accessing the various options: overview of connected devices, real-time installation monitoring, device tests, etc.



Device overview menu

Displays the key device information: name, catalogue number, serial number, location, status and parameters.



Real-time monitoring menu

Displays the current, voltage and power values and the circuit breaker status.

EnerUp + Project app
available from the App
Store and Google Play



DPX³

Integrated measurement and optimum continuity of service



Ep
1450
kWh

I1
250
A

Freq
50.00
Hz

THD
2
%

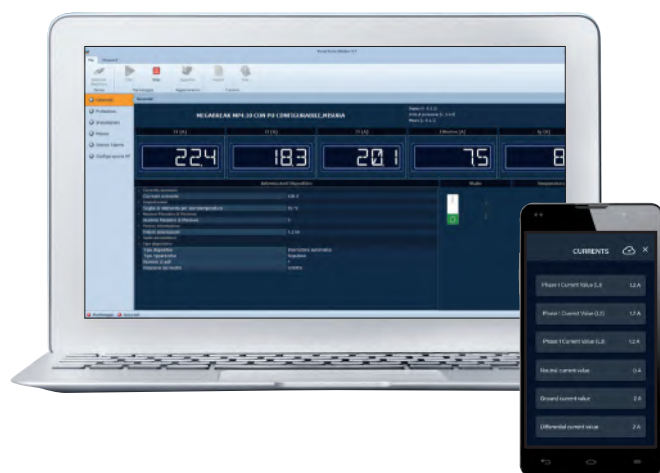
FUNCTIONS
TO MAKE USE
EASIER

Currents, voltages, frequency, power, energy, THD.
Integrated measurement is available on the DPX³ 250 HP,
630 and 1600 MCCBs.

With electronic DPX³ 250 HP, 630 and 1600 S10 with integrated measurement, it is very easy to monitor the parameters and consumption of the different circuits in the installation.

Electronic DPX³ circuit breakers equipped with S10 protection units with integrated measurement can be used to display the current, voltage, active and reactive power, frequency and power factor values, as well as the energy consumption. Alarms can be programmed on some parameters, including minimum and maximum voltage, phase unbalance, and minimum and maximum frequency.

- The measured values are displayed directly on the LCD screen on the front of the equipment.
- The measurement data can also be displayed on a PC equipped with Power Control Station software or remotely on a smartphone or tablet via the EnerUp+ Project app.

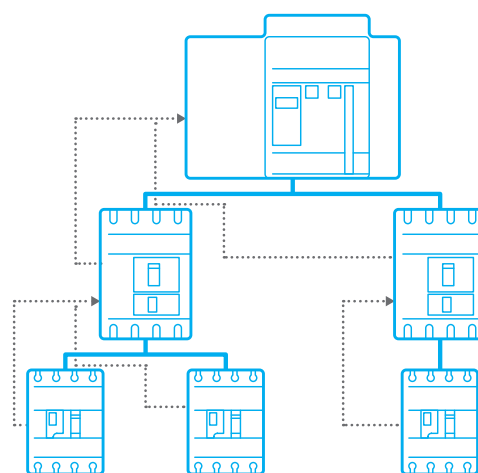


Guaranteeing continuity of service, selectivity between Legrand circuit breakers is optimal thanks to the improved performance of DPX³ devices.

In critical configurations, the dynamic selectivity and logical selectivity offered by the protection units in electronic DPX³ circuit breakers provide total continuity of service in any situation.

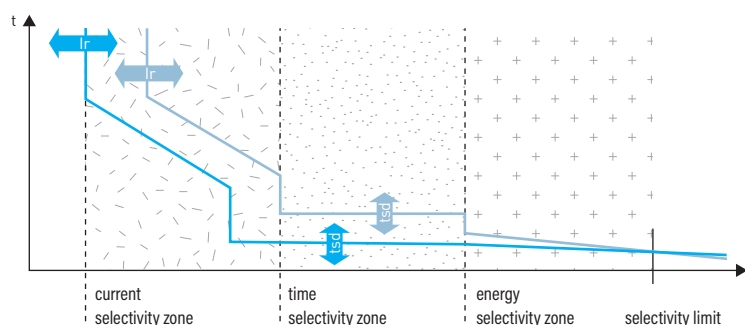
LOGICAL SELECTIVITY

This is "smart" selectivity obtained via communication between electronic DPX³ (and/or DMX³) circuit breakers interconnected by an external wired connection. It can be used to obtain total selectivity on several levels and reduce the thermal and electrodynamic stresses on the cables or the bars, thus optimising the installation.



CURRENT SELECTIVITY AND TIME SELECTIVITY

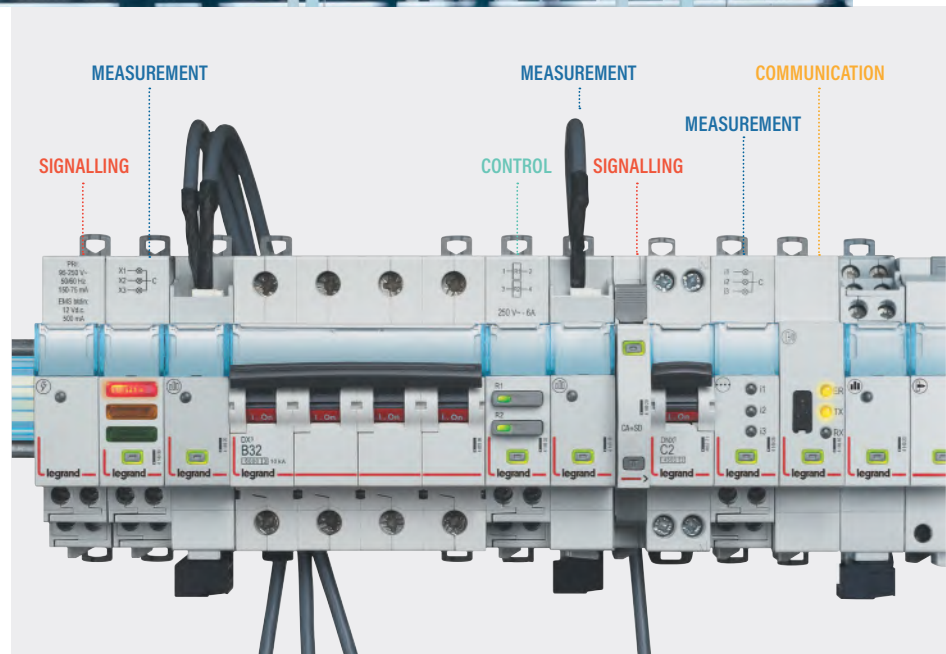
The accurate settings of electronic DPX³ MCCBs ensures optimum current and time selectivity.



CX³ EMS a universal, innovative system for energy management



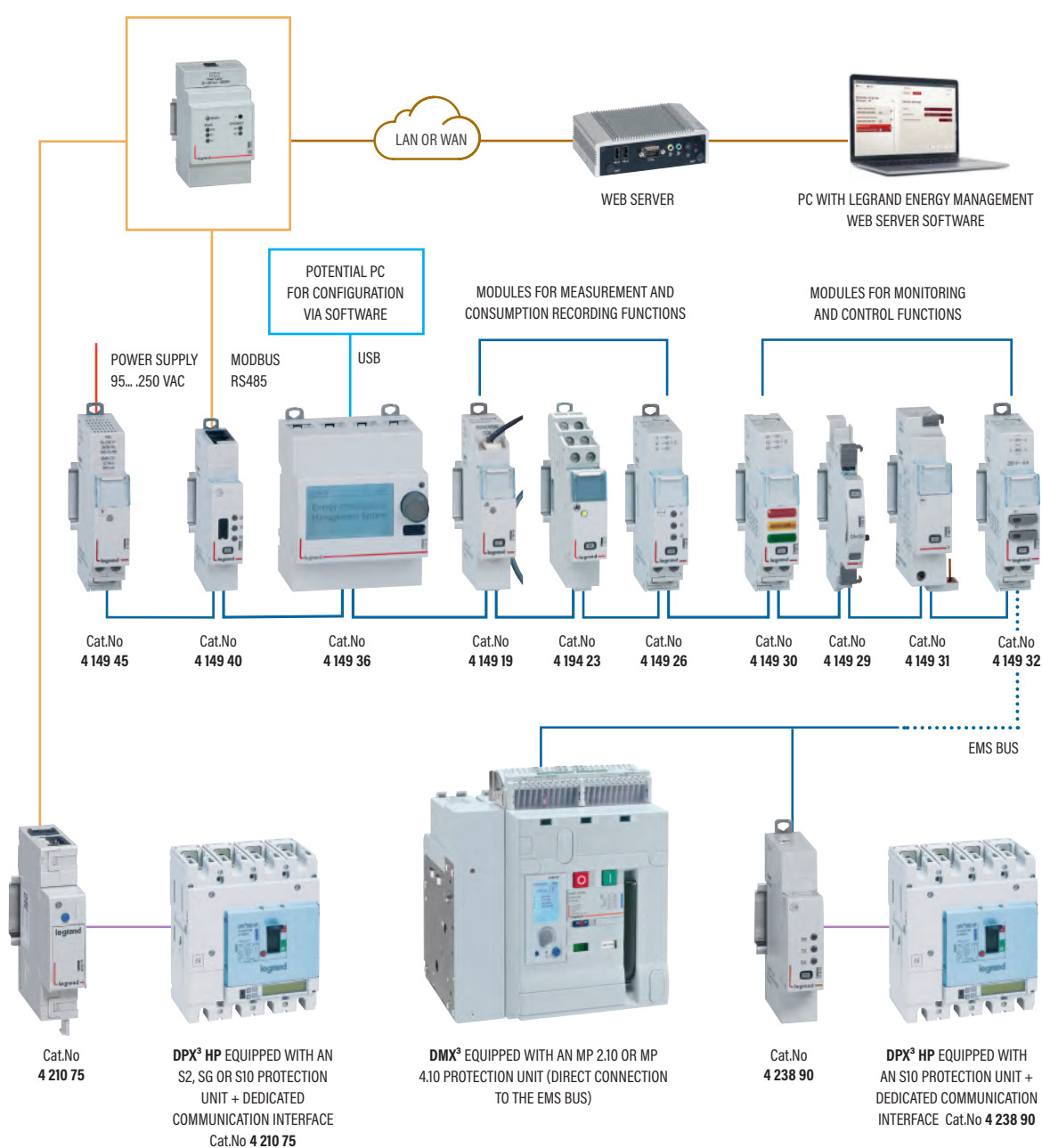
The CX³ EMS energy management system is used to supervise and manage a building's energy consumption, ensuring reliability and continuity of service, for optimum installation efficiency. It offers the option of viewing, measuring and controlling the installation remotely and/or locally. Thanks to the innovative automatic connection process, this autonomous and fully integrated system simplifies mounting and does not require changes to the existing distribution boards wiring.



The CX³ EMS system consists of modules to be mounted on a DIN rail. There is no minimum number of modules and it can also be used to perform very basic supervision tasks. Thanks to its scalability, new functions can be added at any time to suit the needs of the installation.

SCHEMATIC DIAGRAM

CX³ EMS modules are compatible with all Legrand protection devices, from the simple DIN rail mounting circuit breaker, to DPX³ MCCBs or DMX³ ACBs. For DPX³ and DMX³ devices equipped with protection units with integrated measurement, the measured values are automatically fed back to the Legrand Energy Management Web Server software.

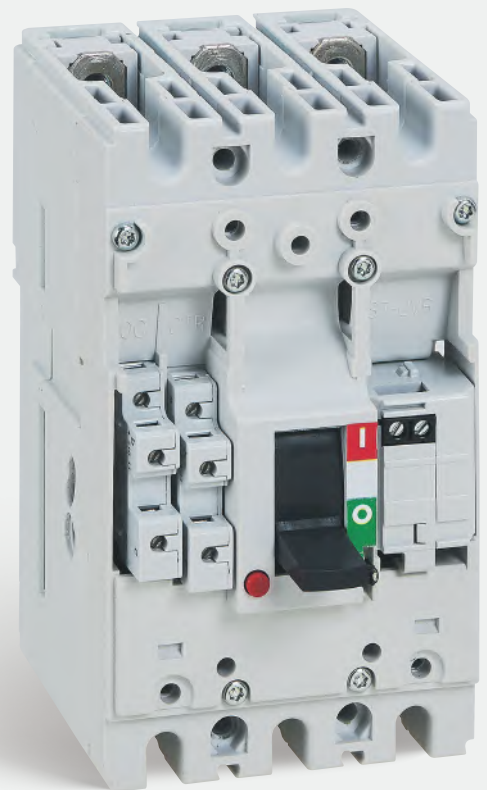


DPX³

Control and signalling auxiliaries that are easy to install and wire up



To provide emergency breaking, automatic or remote control, and feedback on the status of the device, all the DPX³ circuit breakers can very easily be fitted with a comprehensive range of electrical auxiliaries.





The auxiliaries are installed in dedicated slots under the front panel.

NUMBER OF AUXILIARIES THAT CAN BE INSTALLED PER DEVICE

	Auxiliary contacts	Fault signals	Releases
DPX ³ 125 HP	1	1	1
DPX ³ 160 HP	1	1	1
DPX ³ 250 HP	1	1	1
DPX ³ 630	2	2	1
DPX ³ 1600	3	1	1

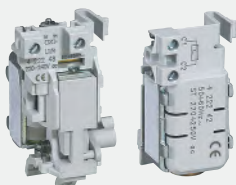
SAFETY, SIMPLICITY AND SPEED OF INSTALLATION



Auxiliary contacts or
fault signal common
to all DPX³ devices



Shunt releases and
undervoltage releases
for DPX³ 125 HP and 250 HP



SHUNT RELEASES and undervoltage
releases for DPX³ 630 and 1600

CONNECTION WIRES

DPX³ MCCBs offer different options
for outgoing connection wires.



DPX³

Supply inversion and motor operators **from 16 to 1600 A**



The interlocking device for DPX³ HP greatly simplifies the installation of a supply inverter: It consists of a plate and a mechanical interlocking device.



Mechanical interlocking device is fitted between two DPX³ HP circuit breakers of the same size. It is also available in a version with an electronic module.



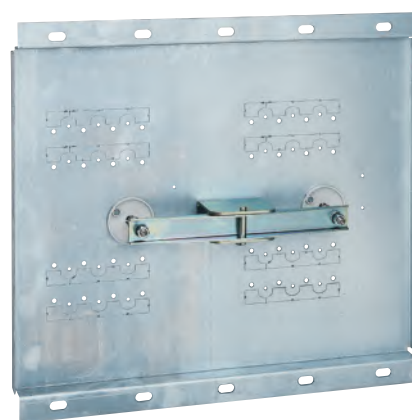
DPX³ HP - FIXED VERSION

The circuit breakers and interlocking device are fixed to the plate with just a few screws.



DPX³ HP - PLUG-IN AND DRAW-OUT VERSION

For supply inverters consisting of DPX³ HP circuit breakers in a plug-in or draw-out version, the plate is fitted with an interlocking device located on the back.



MOTOR OPERATORS

Motor operators for DPX³ HP 250, DPX³ 630 and 1600 are available in a front version.

They take different supply voltages from 24 to 230 V, both DC and AC.

DPX³ 250 HP equipped with a front installation motor operator

DPX³

Connection accessories for multiple configurations



Connection plates, cage terminals,
spreader strips, rear terminals, etc.

DPX³ 125, 160, 250 HP and DPX³ 630 and 1600
have all the accessories needed for upstream
and downstream connection using cables
or bars in a multitude of configurations.

SAFETY,
SIMPLICITY
AND SPEED OF
INSTALLATION





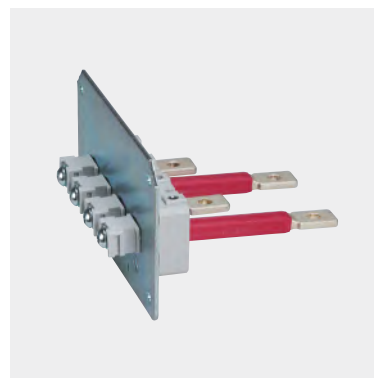
CAGE TERMINALS

High-capacity cage terminals can be used for connection with large cross-section copper or aluminium cables.



SPREADERS

These can be used for connection with large cross-section cables.



FLAT REAR TERMINALS

These can be turned horizontally or vertically.



TERMINAL COVERS

These provide IP 2X protection for the connections.

Connection accessories	Cage terminals		Connection extensions	Adaptors for lugs	Spreaders	Rear terminals
	standard capacity	high capacity				
DPX ³ 125 HP	▪	▪	-	-	▪	▪
DPX ³ 160 HP	▪	▪	-	-	▪	▪
DPX ³ 250 HP	▪	-	-	-	▪	▪
DPX ³ 630	▪	▪	▪	▪	▪	▪
DPX ³ 1600	▪	▪	▪	-	▪	▪

DPX³

Plug-in or draw-out versions for perfect continuity of service



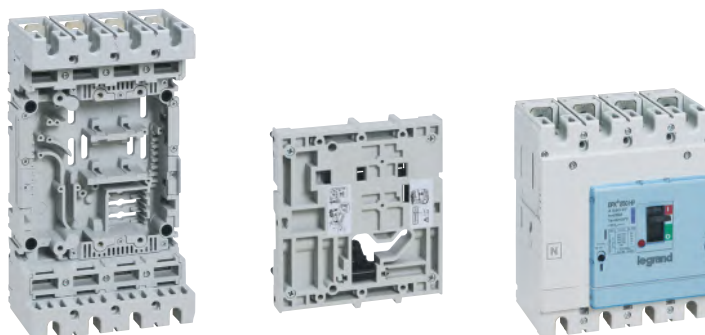
Plug-in and draw-out versions can be used to replace a faulty device in just a few minutes without cutting off the power to the other circuits.

They are available for DPX³ 250 HP and DPX³ 630 and 1600 circuit breakers.

Bases for plug-in and draw-out draw-out devices offer the same connection options as fixed circuit breakers.

PLUG-IN VERSION

To transform a DPX³ 250 HP fixed version to a plug-in version, you simply need to equip it with a mobile kit (fixed to the back of the device) and a base for a plug-in version (which is installed in the board).



BASE



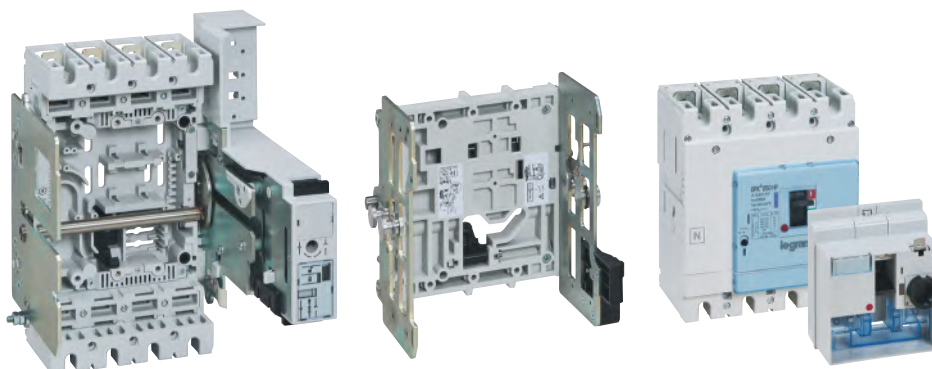
MOBIL KIT



DPX³ 250 HP

DRAW-OUT VERSION

A draw-out version of the DPX³ 250 HP is obtained from a plug-in version equipped with a Debro-lift mechanism and a dedicated front face.



PLUG-IN
VERSION



DEBRO-LIFT
MECHANISM

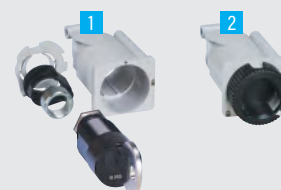


FRONT FACE

SAFETY, SIMPLICITY AND SPEED OF INSTALLATION

LOCKING

The locking accessory **1** is used to lock the circuit breaker in the "drawn-out" position during maintenance operations. It can be fitted with different models of key barrel. Also available as a padlockable version **2**.



DPX³

XL Pro³ software makes configuring your enclosures simplicity itself



XL PRO³ covers the entire Legrand power offer, including the new DPX³ HPs.

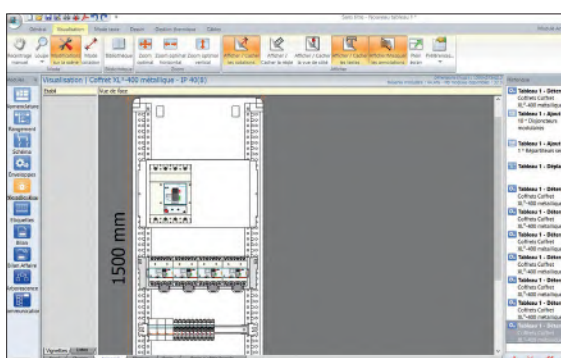
More than ever, this software is a must-have when designing your distribution boards:

- Guide to choosing products and accessories
- View of the enclosure and component layout
- Automatic creation of the costing and ordering file

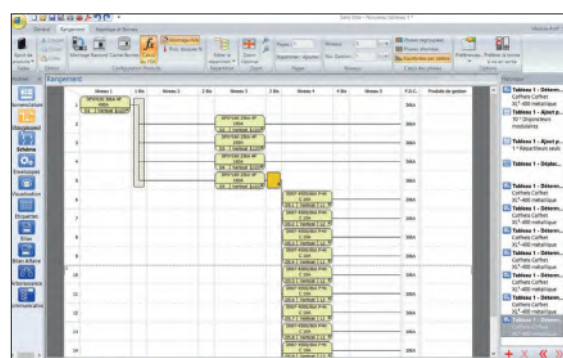


THE IDEAL TOOL FOR MAKING THE DESIGN CALCULATIONS FOR AN ELECTRICAL INSTALLATION

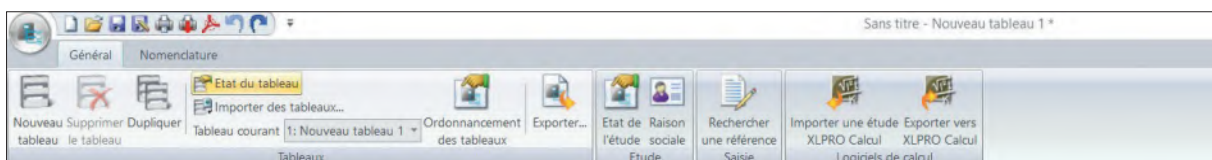
XL PRO³ Calcul can be used to draw single line diagrams, create design calculations and the power analysis, and to calculate the necessary protections with their settings. It interfaces perfectly with XL PRO³.



The new DPX³ offer integrated in the databases.



HX³ and VX³ distribution managed directly in the Arrangement, Circuit diagram and Parts list modules.



A redesigned interface for more intuitive use.

TO ORDER
THE SOFTWARE




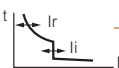
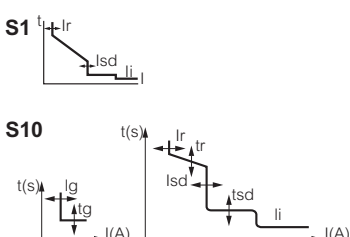


Please contact your Legrand sales office. Lifetime updates are available from:
www.export.legrand.com



DPX³ MCCBs from 16 to 1600 A

fixing on plate

																																		
DEVICES	DPX³ 125 HP thermal magnetic										DPX³ 160 HP thermal magnetic										DPX³ 250 HP thermal magnetic													
Mounting	On plate										On plate										On plate													
Breaking capacity (kA) (EN 60947-2 and IEC 60947-2)	36 kA	50 kA	70 kA	100 kA	36 kA	50 kA	70 kA	100 kA	36 kA	50 kA	70 kA	100 kA	36 kA	50 kA	70 kA	100 kA																		
380/415 V~	36	50	70	100	36	50	70	100	36	50	70	100	36	50	70	100																		
220/240 V~	70	90	100	150	70	90	100	150	70	90	100	150	70	90	100	150																		
Breaking capacity (% Icu)	100	100	100	100	100	100	100	100	100	100	100	100	100	100	100	100																		
Characteristic of use																																		
Nominal frequency	50/60 Hz																																	
Maximum rated operating voltage Ue	690 V (500 V with integrated e.l.c.b ⁽¹⁾)										690 V (500 V with integrated e.l.c.b ⁽¹⁾)										690 V (500 V with integrated e.l.c.b ⁽¹⁾)													
Category of use	A										A										A													
Thermal magnetic adjustment																																		
 Thermal	0.8 to 1 I _n										0.8 to 1 I _n										0.8 to 1 I _n													
Magnetic	10 I _n (400 A for I _n from 16 A to 40 A sizes)										10 I _n										400 A for I _n from 16 A to 40 A sizes / 6.5 to 13 I _n for I _n = 50 A 5 to 10 I _n for I _n > 50 A													
Electronic protection adjustment																																		
																																		
Maximum cable cross-section																																		
Rigid cable	50 mm ²										70 mm ²										150 mm ²													
Flexible cable	50 mm ²										70 mm ²										120 mm ²													
Copper bar and lug width	17 mm										17 mm										25 mm ⁽²⁾													
Tightening torque	7 Nm										7 Nm										I _n ≤ 125 A : 7 Nm / I _n > 125 A : 10 Nm													
Nominal current (I _n) at 40 °C (A)																																		
I _n (A)	16	20	25	32	40	50	63	80	100	125	160										16	20	25	32	40	50	63	80	100	125	160	200	250	
Phase	16	20	25	32	40	50	63	80	100	125	160										16	20	25	32	40	50	63	80	100	125	160	200	250	
N	16	20	25	32	40	50	63	80	100	125	160										16	20	25	32	40	50	63	80	100	125	160	200	250	
Magnetic threshold (I _{sd}) (A) ⁽³⁾ of DPX³ and DPX³ HP thermal magnetic	Fixed										Fixed										Adjustable													
I _n (A)	16	20	25	32	40	50	63	80	100	125	160										16	20	25	32	40	50	63	80	100	125	160	200	250	
Phase	400	400	400	400	400	500	630	800	1000	1250	1600										400	400	400	400	400	325-650	315-630	400-800	500-1000	625-1250	800-1600	1000-2000	1250-2500	
N	400	400	400	400	400	500	630	800	1000	1250	1600										400	400	400	400	400	325-650	315-630	400-800	500-1000	625-1250	800-1600	1000-2000	1250-2500	
Endurance (cycles)																																		
Electrical	8000										8000										8000													
Mechanical	20000										20000										20000													
Electronic earth leakage module																																		
Type	without or integrated ⁽¹⁾										without or integrated ⁽¹⁾										without or integrated ⁽¹⁾													

1: Available only for 36 kA and 50 kA breaking capacities
2: Copper bars only
3: Trip current for 50/60 Hz. For direct current, multiply by 1.5
4: Software/app settings (see p.28)

DPX³ 250 HP electronic release				DPX³ 630 thermal magnetic				DPX³ 630 electronic release				DPX³ 1600 thermal magnetic				DPX³ 1600 electronic release			
On plate				On plate				On plate				On plate				On plate			
36 kA	50 kA	70 kA	100 kA	36 kA	50 kA	70 kA	100 kA	36 kA	50 kA	70 kA	100 kA	36 kA	50 kA	70 kA	100 kA	36 kA	50 kA	70 kA	100 kA
36	50	70	100	36	50	70	100	36	50	70	100	36	50	70	100	36	50	70	100
70	90	100	150	70	100	120	170	70	100	120	170	70	100	120	170	70	100	120	170
100	100	100	100	100	100	100	100	100	100	100	100	100	100	100	100	100	100	100	100
50/60 Hz				50/60 Hz				50/60 Hz				50/60 Hz				50/60 Hz			
690 V (500 V with integrated e.l.c.b ⁽¹⁾)				690 V~				690 V~				690 V~				690 V~			
A				A				A: In 630 A - B: In 200 to 400 A				A				B			
-				0.8 to 1 In				-				0.8 to 1 In				-			
-				5 to 10 In				-				5 to 10 In				-			
S1				S10 - on MCCB ⁽⁴⁾				S1				S10 - on MCCB ⁽⁴⁾				S1			
Ir				0.4 to 1 x In				0.4 to 1 x In				0.4 to 1 x In				0.4 to 1 x In			
tr				3 - 5 - 10 - 15 s				3 to 30 s				3 to 30 s				3 to 30 s			
I _{sd}				1.5 to 10 x Ir / step 0.5 x Ir / 3 to 10 x Ir / step Ir				1.5 to 10 x Ir / step 0.5 x Ir / 3 to 10 x Ir / step Ir				1.5 to 10 x Ir / step 0.5 x Ir / 3 to 10 x Ir / step Ir				1.5 to 10 x Ir / step 0.5 x Ir / 3 to 10 x Ir / step Ir			
tsd (t=k, I ₂ t=k)				100 ms				100 ms				100 ms				100 ms			
Ii (t=k)				-				-				-				-			
Ig				0.2 to 1 x In / step 0.1 x In				0.2 to 1 x In / step 0.1 x In				0.2 to 1 x In / step 0.1 x In				0.2 to 1 x In / step 0.1 x In			
tg (t=k, I ₂ t=k)				80 to 480 ms and 1 s				80 to 480 ms and 1 s				80 to 480 ms and 1 s				80 to 480 ms and 1 s			
150 mm ²				300 mm ² or 2 x 240 mm ²				300 mm ² or 2 x 240 mm ²				2 or 4 x 240 mm ²				2 or 4 x 240 mm ²			
120 mm ²				240 mm ² or 2 x 185 mm ²				240 mm ² or 2 x 185 mm ²				2 or 4 x 185 mm ²				2 or 4 x 185 mm ²			
25 mm ⁽²⁾				32 mm				32 mm				50 mm				50 mm			
10 Nm				15 Nm				15 Nm				20 Nm				20 Nm			
40				100				160				250				250			
250				320				400				500				630			
250				320				400				500				630			
0-50-100 % of phase value (for S1)				0-50-100-150-200 % of phase value (for S10)				0-50-100 % of phase value (for S1)				0-50-100-150-200 % of phase value (for S10)				0-50-100 % of phase value (for S1)			
0-50-100-150-200 % of phase value (for S10)				Adjustable				Adjustable				Adjustable				Adjustable			
-				250-320-400-500-630				-				500-630-800-1000-1250				-			
-				1250-1600-2000-2500-3150-2500-3200-4000-5000-6300				-				2500-3150-4000-5000-6250-5000-6300-8000-10000-12500				-			
-				1250-1600-2000-2500-3150-2500-3200-4000-5000-6300				-				2500-3150-4000-5000-6250-5000-6300-8000-10000-12500				-			
8000				5000				5000				4000				4000			
20000				20000				20000				10000				10000			
without or integrated ⁽¹⁾				downstream e.l.c.bs.				downstream e.l.c.bs.				-				-			

DPX³ 125 HP

thermal magnetic release MCCBs from 16 to 125 A - fixing on plate



4 236 49



4 236 59



4 236 39



Dimensions **p. 58**
Electrical characteristics **p. 61**

Moulded case MCCBs for switching, control isolation and protection of low voltage electrical lines

Can be fitted with auxiliaries (p. 41)

Supplied with: screws for connections, fixing screws and insulated shields (phase barriers)

Can be fitted with cage terminals 120 mm² max. (flexible cable) or 150 mm² max. rigid cable (p. 35)

Conform to IEC 60947-2 - Sealable adjustment.

Can be mounted on plate in XL³ DO cabinets and enclosures

Pack	Cat.Nos		MCCBs thermal magnetic release - fixed version
	3P	4P	
			Thermal adjustable from 0.8 to 1 In Magnetic fixed at 10 In (fixed at 400 A for In from 16 A to 40 A)
			Breaking capacity Icu 36 kA (400 V~)
			In (A)
1	4 236 00	4 236 10	16
1	4 236 01	4 236 11	20
1	4 236 02	4 236 12	25
1	4 236 03	4 236 13	32
1	4 236 04	4 236 14	40
1	4 236 05	4 236 15	50
1	4 236 06	4 236 16	63
1	4 236 07	4 236 17	80
1	4 236 08	4 236 18	100
1	4 236 09	4 236 19	125
			Breaking capacity Icu 50 kA (400 V~)
1	4 236 40	4 236 50	16
1	4 236 41	4 236 51	20
1	4 236 42	4 236 52	25
1	4 236 43	4 236 53	32
1	4 236 44	4 236 54	40
1	4 236 45	4 236 55	50
1	4 236 46	4 236 56	63
1	4 236 47	4 236 57	80
1	4 236 48	4 236 58	100
1	4 236 49	4 236 59	125
			Breaking capacity Icu 70 kA (400 V~)
1	4 236 80	4 236 90	16
1	4 236 81	4 236 91	20
1	4 236 82	4 236 92	25
1	4 236 83	4 236 93	32
1	4 236 84	4 236 94	40
1	4 236 85	4 236 95	50
1	4 236 86	4 236 96	63
1	4 236 87	4 236 97	80
1	4 236 88	4 236 98	100
1	4 236 89	4 236 99	125
			Breaking capacity Icu 100 kA (400 V~)
1	4 237 00	4 237 10	16
1	4 237 01	4 237 11	20
1	4 237 02	4 237 12	25
1	4 237 03	4 237 13	32
1	4 237 04	4 237 14	40
1	4 237 05	4 237 15	50
1	4 237 06	4 237 16	63
1	4 237 07	4 237 17	80
1	4 237 08	4 237 18	100
1	4 237 09	4 237 19	125

Pack	Cat.Nos		MCCBs thermal magnetic release with electronic earth leakage module - fixed version
			Thermal adjustable from 0.8 to 1 In Magnetic fixed at 10 In (fixed at 400 A for In from 16 A to 40 A)
			Equipped with earth leakage module
			Adjustable sensitivity: 0.03 - 0.3 - 1 - 3 A
			Adjustable tripping: 0 - 0.3 - 1 - 3s (with 0.03 A possible only 0 s)
			Breaking capacity Icu 36 kA (400 V~)
			In (A)
		4P	
1	4 236 30		16
1	4 236 31		20
1	4 236 32		25
1	4 236 33		32
1	4 236 34		40
1	4 236 35		50
1	4 236 36		63
1	4 236 37		80
1	4 236 38		100
1	4 236 39		125
			Breaking capacity Icu 50 kA (400 V~)
1	4 236 70		16
1	4 236 71		20
1	4 236 72		25
1	4 236 73		32
1	4 236 74		40
1	4 236 75		50
1	4 236 76		63
1	4 236 77		80
1	4 236 78		100
1	4 236 79		125



DPX³-I 125 HP trip-free switches
p. 52

DPX³ 160 HP

thermal magnetic release MCCBs up to 160 A - fixing on plate



4 237 25



4 237 26

Dimensions **p. 58**
Electrical characteristics **p. 61**

Moulded case MCCBs for switching, control isolation and protection of low voltage electrical lines

Can be fitted with auxiliaries (p. 41)

Supplied with: screws for connections, fixing screws and insulated shields (phase barriers)

Can be fitted with cage terminals 120 mm² max. (flexible cable) or 150 mm² max. rigid cable (p. 35)

Conform to IEC 60947-2 - Sealable adjustment.

Can be mounted on plate in XL³ DO cabinets and enclosures

Pack	Cat.Nos	
		MCCBs thermal magnetic release - fixed version
		Thermal adjustable from 0.8 to 1 In Magnetic fixed at 10 In
		Breaking capacity Icu 36 kA (400 V~) In (A) 160
1	3P 4 237 20 4P 4 237 21	
1	4 237 25 4 231 26	
		Breaking capacity Icu 50 kA (400 V~) 160
1	4 237 30 4 237 31	
		Breaking capacity Icu 70 kA (400 V~) 160
1	4 237 35 4 237 36	
		MCCBs thermal magnetic release with electronic earth leakage module - fixed version
		Thermal adjustable from 0.8 to 1 In Magnetic fixed at 10 In Equipped with earth leakage module Adjustable sensitivity: 0.03 - 0.3 - 1 - 3 A Adjustable tripping: 0 - 0.3 - 1 - 3s (with 0.03 A possible only 0 s)
		Breaking capacity Icu 36 kA (400 V~) In (A) 160
1	4P 4 237 23	
		Breaking capacity Icu 50 kA (400 V~) 160
1	4 237 28	

DPX³-I 160 HP trip-free switches
p. 52

DPX³ 125 HP and 160 HP

equipment and accessories



4 238 74



4 238 76



4 238 35

Pack	Cat.Nos	
		Rotary handles
		Direct on DPX³ Standard (grey) For emergency use (red/yellow)
1	4 238 10	
1	4 238 11	
		Vari-depth handle IP 54 Comprising: connection rod, bracket, self-adhesive drilling template, mounting accessories and door lock mechanism
1	4 238 12	
1	4 238 13	
		Standard (grey) For emergency use (red/yellow)
		Locking accessories for vari-depth handles To be equipped with universal keylocks Cat.No 4 238 80/81/82/83 (p. 19) For vari-depth handle
1	4 238 05	
		Connection accessories
		Insulated shields (phase barriers) Set of 2 insulated shields for DPX ³ 125/160/250 HP 3P
1	4 238 34	
1	4 238 35	
		Set of 3 insulated shields for DPX ³ 125/160/250 HP 4P
1	4 210 49	
		Padlock Padlock for locking in "open" position For DPX ³ 160/250 and DPX ³ 125/160/250 HP
		Cage terminals For Cu/Al cables, 1 x 70 mm ² for flexible and rigid cables (for Al cables In max 80 A)
1	4 238 84	
1	4 238 85	
		Set of 3 terminals for DPX ³ 125/160 HP 3P Set of 4 terminals for DPX ³ 125/160 HP 4P
		High capacity cage terminals For Cu/Al cables, 1 x 120 mm ² for flexible cables and 1 x 150 mm ² for rigid cable
1	4 238 76	
1	4 238 77	
		Set of 3 terminals for DPX ³ 125/160 HP 3P Set of 4 terminals for DPX ³ 125/160 HP 4P
		Spreaders For incoming bars or cable lugs
1	4 238 88	
1	4 238 89	
		Set of 3 spreaders for DPX ³ 125/160 HP 3P Set of 4 spreaders for DPX ³ 125/160 HP 4P
		Rear terminals Used to convert a fixed version with front terminals to a fixed version with rear terminals
1	4 238 91	
1	4 238 92	
		Set of 3 rear terminals for DPX ³ 125/160 HP 3P Set of 4 rear terminals for DPX ³ 125/160 HP 4P
		Sealable terminal shields
		For front terminals For DPX ³ 125/160 HP 3P For DPX ³ 125/160 HP 4P
1	4 238 93	
1	4 238 94	
		Mechanical interlock for transfer switches
1	4 238 27	
1	4 238 28	
		Interlocking mechanism for 2 fixed DPX ³ 125/160/250 HP MCCBs Interlocking mechanism for 2 fixed DPX ³ 125/160/250 HP MCCBs with electronic module
1	4 238 25	
		Plate for mounting and interlocking of 2 DPX ³ 125/160 HP

Universal key locks for DPX³ 125/160/250 HP
p. 41

Signalling and control accessories
p. 41

DPX³ 250 HP

thermal magnetic release MCCBs from 16 to 250 A - fixing on plate



4 230 72



4 230 87



4 231 17

Dimensions **p. 59-60**
Electrical characteristics **p. 61**

Moulded case MCCBs for switching, control isolation and protection of low voltage electrical lines. Can be fitted with auxiliaries (p. 41)
Supplied with: screws for connections, fixing screws, and insulated shIELDS (phase barriers)
Can be fitted with cage terminals 120 mm² max. (flexible cable) or 150 mm² max. rigid cable (p. 41)
Can be mounted on plate in XL³ DO cabinets and enclosures
Conform to IEC 60947-2

Pack	Cat.Nos		MCCBs thermal magnetic release - fixed version
	3P	4P	
			Thermal adjustable from 0.8 to 1 In Magnetic: fixed at 400 A for In ≤ 40 A, adjustable from 6.5 to 13 In for In = 50 A, adjustable from 5 to 10 In for In ≥ 63 A
			Breaking capacity Icu 36 kA (400 V~)
			In (A)
1	4 230 00	4 230 15	16
1	4 230 01	4 230 16	20
1	4 230 02	4 230 17	25
1	4 230 03	4 230 18	32
1	4 230 04	4 230 19	40
1	4 230 05	4 230 20	50
1	4 230 06	4 230 21	63
1	4 230 07	4 230 22	80
1	4 230 08	4 230 23	100
1	4 230 09	4 230 24	125
1	4 230 10	4 230 25	160
1	4 230 11	4 230 26	200
1	4 230 12	4 230 27	250
			Breaking capacity Icu 50 kA (400 V~)
1	4 230 60	4 230 75	16
1	4 230 61	4 230 76	20
1	4 230 62	4 230 77	25
1	4 230 63	4 230 78	32
1	4 230 64	4 230 79	40
1	4 230 65	4 230 80	50
1	4 230 66	4 230 81	63
1	4 230 67	4 230 82	80
1	4 230 68	4 230 83	100
1	4 230 69	4 230 84	125
1	4 230 70	4 230 85	160
1	4 230 71	4 230 86	200
1	4 230 72	4 230 87	250
			Breaking capacity Icu 70 kA (400 V~)
1	4 231 20	4 231 35	16
1	4 231 21	4 231 36	20
1	4 231 22	4 231 37	25
1	4 231 23	4 231 38	32
1	4 231 24	4 231 39	40
1	4 231 25	4 231 40	50
1	4 231 26	4 231 41	63
1	4 231 27	4 231 42	80
1	4 231 28	4 231 43	100
1	4 231 29	4 231 44	125
1	4 231 30	4 231 45	160
1	4 231 31	4 231 46	200
1	4 231 32	4 231 47	250
			Breaking capacity Icu 100 kA (400 V~)
1	4 231 50	4 231 65	16
1	4 231 51	4 231 66	20
1	4 231 52	4 231 67	25
1	4 231 53	4 231 68	32

Pack	Cat.Nos		MCCBs thermal magnetic release - fixed version (continued)
	3P	4P	
			Breaking capacity Icu 100 kA (400 V~) (continued)
			In (A)
1	4 231 54	4 231 69	40
1	4 231 55	4 231 70	50
1	4 231 56	4 231 71	63
1	4 231 57	4 231 72	80
1	4 231 58	4 231 73	100
1	4 231 59	4 231 74	125
1	4 231 60	4 231 75	160
1	4 231 61	4 231 76	200
1	4 231 62	4 231 77	250
			MCCBs thermal magnetic release with electronic earth leakage module - fixed version
			Thermal adjustable from 0.8 to 1 In Magnetic: fixed at 400 A for In ≤ 40 A, adjustable from 6.5 to 13 In for In = 50 A, adjustable from 5 to 10 In for In ≥ 63 A Equipped with earth leakage module Adjustable sensitivity: 0.03 - 0.3 - 1 - 3 A Adjustable tripping: 0 - 0.3 - 1 - 3s (with 0.03 A possible only 0s)
			Breaking capacity Icu 36 kA (400 V~)
			In (A)
	4P		
1	4 230 45		16
1	4 230 46		20
1	4 230 47		25
1	4 230 48		32
1	4 230 49		40
1	4 230 50		50
1	4 230 51		63
1	4 230 52		80
1	4 230 53		100
1	4 230 54		125
1	4 230 55		160
1	4 230 56		200
1	4 230 57		250
			Breaking capacity Icu 50 kA (400 V~)
1	4 231 05		16
1	4 231 06		20
1	4 231 07		25
1	4 231 08		32
1	4 231 09		40
1	4 231 10		50
1	4 231 11		63
1	4 231 12		80
1	4 231 13		100
1	4 231 14		125
1	4 231 15		160
1	4 231 16		200
1	4 231 17		250

DPX³ 250 HP

S1 electronic release MCCBs from 40 to 250 A - fixing on plate



4 232 28



Dimensions **p. 59-60**
Electrical characteristics **p. 61**

Moulded case MCCBs for switching, control isolation and protection of low voltage electrical lines. Can be fitted with auxiliaries (p. 41)
Supplied with: screws for connection fixing screws, connection plates for bars and cable lugs and insulated shIELDS (phase barriers)
Can be fitted with cage terminals 120 mm² max. (flexible cable) or 150 mm² max. rigid cable (p. 41)
Can be mounted on plate in XL³ DO cabinets and enclosures
Conform to IEC 60947-2

Pack	Cat.Nos		MCCBs S1 electronic release - fixed version
			Protection against overloads: I _r adjustable from 0.4 to 1 x I _n Protection against short circuits: I _{sd} adjustable from 1.5 to 10 x I _r
			Breaking capacity I_{cu} 36 kA (400 V_~)
			I _n (A)
	3P	4P	
1	4 232 00	4 232 05	40
1	4 232 01	4 232 06	100
1	4 232 02	4 232 07	160
1	4 232 03	4 232 08	250
			Breaking capacity I_{cu} 50 kA (400 V_~)
1	4 232 20	4 232 25	40
1	4 232 21	4 232 26	100
1	4 232 22	4 232 27	160
1	4 232 23	4 232 28	250
			Breaking capacity I_{cu} 70 kA (400 V_~)
1	4 232 40	4 232 45	40
1	4 232 41	4 232 46	100
1	4 232 42	4 232 47	160
1	4 232 43	4 232 48	250
			Breaking capacity I_{cu} 100 kA (400 V_~)
1	4 232 50	4 232 55	40
1	4 232 51	4 232 56	100
1	4 232 52	4 232 57	160
1	4 232 53	4 232 58	250

Pack	Cat.Nos	MCCBs S1 electronic release with electronic earth leakage module - fixed version
		Protection against overloads: I _r adjustable from 0.4 to 1 x I _n Protection against short circuits: I _{sd} adjustable from 1.5 to 10 x I _r Equipped with earth leakage module with knobs Adjustable sensitivity: 0.03 - 0.3 - 1 - 3 A Adjustable tripping: 0 - 0.3 - 1 - 3s (with 0.03 A possible only 0s)
		Breaking capacity I_{cu} 36 kA (400 V_~)
		I _n (A)
	4P	
1	4 232 15	40
1	4 232 16	100
1	4 232 17	160
1	4 232 18	250
		Breaking capacity I_{cu} 50 kA (400 V_~)
1	4 232 35	40
1	4 232 36	100
1	4 232 37	160
1	4 232 38	250



DPX³-I 250 HP trip-free switches
p. 52



DPX³ 250 HP magnetic release only
p. 53



Signalling and control accessories
p. 41

DPX³ 250 HP

S10 configurable electronic release MCCBs from 40 to 250 A - fixing on plate



4 234 23



4 234 28



4 234 38



Dimensions **p. 59-60**
Electrical characteristics **p. 61**

Moulded case MCCBs for switching, control isolation and protection of low voltage electrical lines. Can be fitted with auxiliaries (p. 41)
Supplied with: screws for connection fixing screws, connection plates for bars and cable lugs and insulated shileds (phase barriers)
Can be fitted with cage terminals 120 mm² max. (flexible cable) or 150 mm² max. rigid cable (p. 41)
Can be mounted on plate in XL³ DO cabinets and enclosures
Conform to IEC 60947-2

Pack	Cat.Nos		MCCBs S10 configurable electronic release - fixed version
	3P	4P	
			Adjustement of Ir, Isd, li, lg, tr, tsd, tg directly on the MCCB or via software/App (p. 43) For connection to the App add a Bluetooth communication key Cat.No 0 283 10 (p. 50) Green indicator lamp Connector for test unit Logical selectivity 4P version: adjustment of neutral on front panel or by software/App
			Breaking capacity Icu 36 kA (400 V~)
1	4 234 00	4 234 05	In (A) 40
1	4 234 01	4 234 06	100
1	4 234 02	4 234 07	160
1	4 234 03	4 234 08	250
			Breaking capacity Icu 50 kA (400 V~)
1	4 234 20	4 234 25	40
1	4 234 21	4 234 26	100
1	4 234 22	4 234 27	160
1	4 234 23	4 234 28	250
			Breaking capacity Icu 70 kA (400 V~)
1	4 234 40	4 234 45	40
1	4 234 41	4 234 46	100
1	4 234 42	4 234 47	160
1	4 234 43	4 234 48	250
			Breaking capacity Icu 100 kA (400 V~)
1	4 234 50	4 234 55	40
1	4 234 51	4 234 56	100
1	4 234 52	4 234 57	160
1	4 234 53	4 234 58	250

Pack	Cat.Nos		MCCBs S10 configurable electronic release with electronic earth leakage module - fixed version
			Adjustement of Ir, Isd, li, lg, tr, tsd, tg directly on the MCCB or via software/App (p. 43) For connection to the App add a Bluetooth communication key Cat.No 0 283 10 (p. 50) Green indicator lamp Connector for test unit Logical selectivity 4P version: adjustment of neutral on front panel or by software/App Equipped with earth leakage module Adjustable sensitivity: 0.03 - 0.3 - 1 - 3 A Adjustable tripping: 0 - 0.3 - 1 - 3s
			Breaking capacity Icu 36 kA (400 V~)
		4P	In (A)
1	4 234 15		40
1	4 234 16		100
1	4 234 17		160
1	4 234 18		250
			Breaking capacity Icu 50 kA (400 V~)
1	4 234 35		40
1	4 234 36		100
1	4 234 37		160
1	4 234 38		250



DPX³-I 250 HP trip-free switches
p. 52



DPX³ 250 HP magnetic release only
p. 53



Signalling and control accessories
p. 41

DPX³ 250 HP

S10 configurable electronic release MCCBs from 40 to 250 A - fixing on plate (continued)



4 234 83



4 234 88

Dimensions **p. 59-60**
Electrical characteristics **p. 61**

Moulded case MCCBs for switching, control isolation and protection of low voltage electrical lines. Can be fitted with auxiliaries (p. 41)
Supplied with: screws for connection fixing screws, connection plates for bars and cable lugs and insulated shileds (phase barriers)
Can be fitted with cage terminals 120 mm² max. (flexible cable) or 150 mm² max. rigid cable (p. 41)
Can be mounted on plate in XL³ DO cabinets and enclosures
Conform to IEC 60947-2

Pack	Cat.Nos		MCCBs S10 configurable electronic release with energy metering central unit - fixed version
	3P	4P	
			Adjustement of Ir, Isd, li, lg, tr, tsd, tg directly on the MCCB or via software/App (p. 43) For connection to the App add a Bluetooth communication key Cat.No 0 283 10, (p. 50) Green indicator lamp Connector for test unit Logical selectivity 4P version: adjustment of neutral on front panel or by software/App For the correct operation and power supply of metering function, see p. 50
			Breaking capacity Icu 36 kA (400 V~)
1	4 234 60	4 234 65	In (A) 40
1	4 234 61	4 234 66	100
1	4 234 62	4 234 67	160
1	4 234 63	4 234 68	250
			Breaking capacity Icu 50 kA (400 V~)
1	4 234 80	4 234 85	40
1	4 234 81	4 234 86	100
1	4 234 82	4 234 87	160
1	4 234 83	4 234 88	250
			Breaking capacity Icu 70 kA (400 V~)
1	4 235 00	4 235 05	40
1	4 235 01	4 235 06	100
1	4 235 02	4 235 07	160
1	4 235 03	4 235 08	250
			Breaking capacity Icu 100 kA (400 V~)
1	4 235 10	4 235 15	40
1	4 235 11	4 235 16	100
1	4 235 12	4 235 17	160
1	4 235 13	4 235 18	250

Pack	Cat.Nos		MCCBs S10 configurable electronic release with energy metering central unit and electronic earth leakage module - fixed version
			Adjustement of Ir, Isd, li, lg, tr, tsd, tg directly on the MCCB or via software/App (p. 43) For connection to the App add a Bluetooth communication key Cat.No 0 283 10 (p. 50) Green indicator lamp Connector for test unit Logical selectivity 4P version: adjustment of neutral on front panel or by software/App Equipped with earth leakage module Adjustable sensitivity: 0.03 - 0.3 - 1 - 3 A Adjustable tripping: 0 - 0.3 - 1 - 3s For the correct operation and power supply of metering function, see p. 50
			Breaking capacity Icu 36 kA (400 V~)
		4P	In (A)
1	4 234 75		40
1	4 234 76		100
1	4 234 77		160
1	4 234 78		250
			Breaking capacity Icu 50 kA (400 V~)
1	4 234 95		40
1	4 234 96		100
1	4 234 97		160
1	4 234 98		250

Power supply and supervision system
p. 50

DPX³-I 250 HP trip-free switches
p. 52

DPX³ 250 HP magnetic release only
p. 53

Signalling and control accessories
p. 41

DPX³ 250 HP

equipment and accessories



Pack	Cat.Nos	Plug-in version	Pack	Cat.Nos	Mechanical interlock for transfer switches
1	4 238 50 4 238 51	A DPX ³ HP plug-in version is a DPX ³ HP fitted with a plug-in mobile part kit and mounted on a plug-in base	1	4 238 27	Interlocking mechanism for 2 fixed DPX ³ 125/250 HP MCCBs
1	4 238 52 4 238 53	Plug-in bases For DPX ³ 250 HP	1	4 238 28	Interlocking mechanism for 2 fixed DPX ³ 125/250 HP MCCBs with electronic module
1	4 238 52 4 238 53	Plug-in mobile part kit For DPX ³ 250 HP	1	4 238 29	Rear interlocking mechanism for 2 plug-in / draw-out DPX ³ 250 HP MCCBs
1	4 238 63	Locking support Locking support for plug-in version. To be equipped with universal keylocks Cat.No 4 238 80/81/82/83 (p. 41)	1	4 238 26	Plate for mounting and interlocking of 2 DPX ³ 250 HP
1	4 238 60 4 238 61	Draw-out version A DPX ³ HP draw-out version is a plug-in DPX ³ HP fitted with a "Debro-lift mechanism" and a "Draw-out front cover mask" which can be used to withdraw the DPX ³ HP while keeping it on its base	1	4 238 14	Rotary handles
1	4 238 55	Debro-lift mechanism For DPX ³ 250 HP ; Supplied with handle	1	4 238 15	Direct on DPX³ Standard (grey)
1	4 238 56	Draw-out front cover masks For DPX ³ 250 HP alone	1	4 238 16	For emergency use (red/yellow)
1	4 238 62	Locking support in draw-out position Enable locking of DPX ³ 250 HP in draw-out position. To be equipped with universal keylocks Cat.No 4 238 80/81/82/83 (p. 41)	1	4 238 17	Vari-depth handle IP 54 Comprising: connection rod, bracket, self-adhesive drilling template, mounting accessories and door lock mechanism
1	4 238 64	Padlock in draw-out position Enable padlocking of DPX ³ HP in draw-out position	1	4 238 04	Standard (grey)
1	4 222 30	Auxiliary contact Automatic auxiliary contact for DPX ³ HP draw-out version (up to 2 contacts by DPX ³ -HP)	1	4 238 05	For emergency use (red/yellow)
1	0 098 19	Set of connectors for plug-in and draw-out versions Signalling contact plugged-in / drawn-out	1	4 238 06	Locking supports for rotary handles To be equipped with universal keylocks Cat.No 4 238 80/81/82/83 (p. 41)
1	4 210 48	Signalling contact For DPX ³ 160/250 and DPX ³ 250 HP plug-in versions	1	4 238 05	For direct handle
			1	4 238 05	For vari-depth handle
			1	4 238 06	Auxiliary contact for rotary handles 1 N/C + 1 N/O auxiliary contact for rotary handles
			1	4 238 40	Motor-driven handles
			1	4 238 41	Front installation motor operators
			1	4 238 42	24 V~/=
			1	4 238 43	48 V~/=
			1	4 238 43	110 V~/=
			1	4 238 43	230 V~/=
			1	4 238 45	Locking accessories for motor-driven handles
			1	4 238 46	Locking support for motor operators Cat.Nos 4 238 40/41/42/43. To be equipped with universal keylocks Cat.No 4 238 80/81/82/83 (p. 41)
			1	4 238 46	Padlock for motor operators Cat.Nos 4 238 40/41/42/43

DPX³ 250 HP

equipment and accessories (continued)



Pack	Cat.Nos	Connection accessories
1	4 238 34	Insulated shields (phase barriers)
1	4 238 35	Set of 2 insulated shields for DPX ³ HP 125/250 3P
1	4 238 35	Set of 3 insulated shields for DPX ³ HP 125/250 4P
1	4 210 49	Padlock
		Padlock for locking in "open" position
		For DPX ³ 160/250 and DPX ³ 125/250 HP
		Cage terminals
		For Cu/Al cables, 1 x 120 mm ² for flexible
		cables and 1 x 150 mm ² for rigid cable
1	4 238 30	Set of 3 terminals for DPX ³ 250 HP 3P
1	4 238 31	Set of 4 terminals for DPX ³ 250 HP 4P
1	4 238 23	Sealable terminal shields (for front terminals)
1	4 238 24	For DPX ³ 250 HP 3P
		For DPX ³ 250 HP 4P
		Spreaders
		For incoming bars or cable lugs
1	6 250 14	Set of 3 spreaders for DPX ³ 250 HP 3P
1	6 250 18	Set of 4 spreaders for DPX ³ 250 HP 4P
		Rear terminals
		Flat swivel terminals
		Used to convert a fixed version with front terminals to
		a fixed version with rear terminals
1	4 238 21	Set of 3 rear terminals for DPX ³ 250 HP 3P
1	4 238 22	Set of 4 rear terminals for DPX ³ 250 HP 4P
		Universal key locks for DPX³ 125/160/250 HP
		Allow locking of rotary handles, draw-out mechanisms
		or motor-driven handles.
		To be used in combination with locking accessories
		Cat.No 4 238 04/05/45/46/62/63 (p. 35 and 41)
1	4 238 80	Key barrel and flat key with random mapping
1	4 238 81	Key barrel and flat key with fixed mapping EL43525
1	4 238 82	Key barrel and flat key with fixed mapping EL43363
1	4 238 83	Key barrel and star key with random mapping

DPX³ 125/160/250 HP common auxilia- ries and accessories



Pack	Cat.Nos	Auxiliary contact or fault signal
1	4 210 11	Auxiliary contact or fault signalling contact
		Shunt releases
		Allow remote tripping of a DPX ³ /DPX ³ -I 160/250 and
		DPX ³ /DPX ³ -I 125/160/250 HP
1	4 210 12	12 V~/=
1	4 210 13	24 V~/=
1	4 210 14	48 V~/=
1	4 210 15	110-130 V~
1	4 210 16	200-277 V~
1	4 210 17	380-480 V~
		Undervoltage releases
		Allow remote tripping of a DPX ³ /DPX ³ -I 160/250 and
		DPX ³ /DPX ³ -I 125/160/250 HP
1	4 210 18	12 V~/=
1	4 210 19	24 V~/=
1	4 210 20	48 V~/=
1	4 210 21	110-130 V~/=
1	4 210 22	200-240 V~
1	4 210 23	277 V~
1	4 210 24	380-415 V~
1	4 210 25	440-480 V~
		Time lag (800 ms) undervoltage release
		Allow remote tripping of a DPX ³ /DPX ³ -I 160/250 and
		DPX ³ /DPX ³ -I 125/160/250 HP
		Prevents false tripping in the event of power supply
		microbreaks
		Time-lag modules
1	0 261 90	230 V~
1	0 261 91	400 V~
		Release
		To be equipped with a time-lag module
		Cat.Nos 0 261 90/91
1	4 210 98	For DPX ³ /DPX ³ -I 160/250 and
		DPX ³ /DPX ³ -I 125/160/250 HP

DPX³ 630


thermal magnetic release MCCBs from 250 to 630 A - fixing on plate



4 220 02



4 220 07

 Dimensions **p. 62-63**
Electrical characteristics **p. 66**

Moulded case MCCBs for switching, control isolation and protection of low voltage electrical lines

Can be fitted with auxiliaries (p. 50)

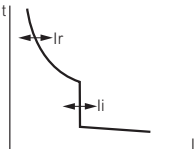
Can be used with earth leakage modules (p. 45) or with residual current relays (p. 51)

Supplied complete with:

- fixing screws
- connection plates for bars
- insulated shields (phase barriers)

Conform to IEC 60947-2 - Sealable adjustment

Can be mounted on plate in XL³ DO cabinets and enclosures

Pack	Cat.Nos		MCCBs thermal magnetic release - fixed version
			Thermal adjustable from 0.8 to 1 In Magnetic adjustable from 5 to 10 In
			
			Breaking capacity Icu 36 kA (400 V~)
	3P	4P	In (A)
1	4 220 00	4 220 05	250
1	4 220 01	4 220 06	320
1	4 220 02	4 220 07	400
1	4 220 03	4 220 08	500
1	4 220 04	4 220 09	630
	3P + N/2		
1	4 220 10		320
1	4 220 11		400
1	4 220 12		500
1	4 220 13		630
	3P	4P	Breaking capacity Icu 50 kA (400 V~)
1	4 220 14	4 220 19	250
1	4 220 15	4 220 20	320
1	4 220 16	4 220 21	400
1	4 220 17	4 220 22	500
1	4 220 18	4 220 23	630
	3P + N/2		
1	4 220 24		320
1	4 220 25		400
1	4 220 26		500
1	4 220 27		630

Pack	Cat.Nos		MCCBs thermal magnetic release - fixed version (continued) Breaking capacity Icu 70 kA (400 V~) In (A)
	3P	4P	
1	4 220 28	4 220 33	250
1	4 220 29	4 220 34	320
1	4 220 30	4 220 35	400
1	4 220 31	4 220 36	500
1	4 220 32	4 220 37	630
	3P + N/2		
1	4 220 38		320
1	4 220 39		400
1	4 220 40		500
1	4 220 41		630
	3P	4P	Breaking capacity Icu 100 kA (400 V~)
1	4 220 42	4 220 47	
1	4 220 43	4 220 48	250
1	4 220 44	4 220 49	320
1	4 220 45	4 220 50	400
1	4 220 46	4 220 51	500
	3P + N/2		630
1	4 220 52		320
1	4 220 53		400
1	4 220 54		500
1	4 220 55		630

 DPX³-I 630 trip-free switches
p. 52

 DPX³ 630 magnetic release only
p. 53

DPX³ 630

S1 electronic release MCCBs from 250 to 630 A - fixing on plate



4 225 15

Dimensions **p. 62-63**
Electrical characteristics **p. 66**

Moulded case MCCBs for switching, control isolation and protection of low voltage electrical lines

Can be fitted with auxiliaries (p. 50)

Can be used with earth leakage modules (p. 45) or with residual current relays (p. 51)

Do not accept DPX³ electronic interface for Modbus Cat.No 4 210 75 (p. 50)

Supplied complete with:

- fixing screws
- connection plates for bars
- insulated shields (phase barriers)

Conform to IEC 60947-2 - Sealable adjustment

Can be mounted on plate in XL³ DO cabinets and enclosures

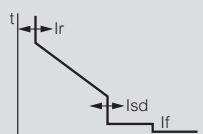
Pack	Cat.Nos		MCCBs S1 electronic release - fixed version	
	3P	4P		
			Adjustment of Ir, Isd (opposite) Instantaneous protection If = 5 kA Green indicator lamp Connector for test unit Dynamic selectivity 4P version: adjustment of neutral on front panel	
			Breaking capacity Icu 36 kA (400 V~)	
			In (A)	
1	4 224 98	4 225 03	250	
1	4 224 99	4 225 04	320	
1	4 225 00	4 225 05	400	
1	4 225 01	4 225 06	500	
1	4 225 02	4 225 07	630	
			Breaking capacity Icu 50 kA (400 V~)	
1	4 225 08	4 225 13	250	
1	4 225 09	4 225 14	320	
1	4 225 10	4 225 15	400	
1	4 225 11	4 225 16	500	
1	4 225 12	4 225 17	630	
			Breaking capacity Icu 70 kA (400 V~)	
1	4 225 18	4 225 23	250	
1	4 225 19	4 225 24	320	
1	4 225 20	4 225 25	400	
1	4 225 21	4 225 26	500	
1	4 225 22	4 225 27	630	
			Breaking capacity Icu 100 kA (400 V~)	
1	4 225 28	4 225 33	250	
1	4 225 29	4 225 34	320	
1	4 225 30	4 225 35	400	
1	4 225 31	4 225 36	500	
1	4 225 32	4 225 37	630	

DPX³ 630/1600

electronic release adjustment

Performance data

S1 - Adjustment of Ir, Isd



Protection against overloads:

- Ir adjustable from 0.4 to 1 x In

Protection against short circuits:

- Isd adjustable from 1.5 to 10 x Ir

Instantaneous protection If = 5 kA

The protection units S1 (DPX3 250 HP, DPX3 630 and DPX3 1600) are normally supplied by the internal current transformers (CTs). When the current flowing through the circuit breaker is greater than 12% of the maximum power (20% of In for single phase load), the internal current supply ensures all operation of the protection unit, included: LED status and diagnostic functions (e.g. trip test).

To ensure the same performance when the load is less than 12% of the maximum power (20% of In for single phase load) to grant complete functions, the following optional power supply can be used:

* Power supply temporarily connected to frontal Service port,

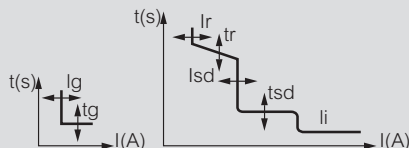
connected to specific adapter for PC (Legrand use only)

Together with above protections, activated in case of electric faults, the trip unit also integrates self-protection for:

* Over temperature : in case the internal temperature of protection unit exceed 95°C;

* Auto diagnostics: in case embedded watchdog circuit detects internal malfunctions, which could compromise the correct working of microcontroller.

S10 - Adjustment of Ir, tr, Isd, tsd, li, lg, tg,



Protection against overloads:

- Ir adjustable from 0.2 to 1 x In

- tr adjustable from 3 to 30 s

Protection against short circuits:

- Isd adjustable from 1.5 Ir to 10 x In

- tsd adjustable from 40 to 480 ms

- li adjustable from 2 to 15 x In (via software/App)

Protection against earth fault:

- lg adjustable from 0.2 to 1 x In

- tg adjustable from 80 ms to 1 s

DPX³ 630

S10 configurable electronic release MCCBs from 250 to 630 A - fixing on plate



4 228 27



4 228 24



4 228 29

Dimensions **p. 62-63**
 Electrical characteristics **p. 66**

Moulded case MCCBs for switching, control isolation and protection of low voltage electrical lines

Can be fitted with auxiliaries (p. 50)

Can be used with earth leakage modules (p. 45) or with residual current relays (p. 51)

Supplied complete with:

- fixing screws

- connection plates for bars

- insulated shields (phase barriers)

Conform to IEC 60947-2 - Sealable adjustment

Can be mounted on plate in XL³ DO cabinets and enclosures

Pack	Cat.Nos		MCCBs S10 configurable electronic release - fixed version
	3P	4P	
			Adjustment of I_r , I_{sd} , I_i , I_g , t_r , t_{sd} , t_g directly on the MCCB or via software/App (p. 43) For connection to the App add a Bluetooth communication key Cat.No 0 283 10 (p. 50) Green indicator lamp Connector for test unit Logical selectivity 4P version: adjustment of neutral on front panel or by software or App
			Breaking capacity Icu 36 kA (400 V~)
1	4 228 20	4 228 25	I_n (A)
1	4 228 21	4 228 26	250
1	4 228 22	4 228 27	320
1	4 228 23	4 228 28	400
1	4 228 24	4 228 29	500
1			630
			Breaking capacity Icu 50 kA (400 V~)
1	4 228 30	4 228 35	250
1	4 228 31	4 228 36	320
1	4 228 32	4 228 37	400
1	4 228 33	4 228 38	500
1	4 228 34	4 228 39	630
			Breaking capacity Icu 70 kA (400 V~)
1	4 228 40	4 228 45	250
1	4 228 41	4 228 46	320
1	4 228 42	4 228 47	400
1	4 228 43	4 228 48	500
1	4 228 44	4 228 49	630
			Breaking capacity Icu 100 kA (400 V~)
1	4 228 50	4 228 55	250
1	4 228 51	4 228 56	320
1	4 228 52	4 228 57	400
1	4 228 53	4 228 58	500
1	4 228 54	4 228 59	630

Pack	Cat.Nos		MCCBs S10 configurable electronic release with energy metering central unit - fixed version
	3P	4P	
			Adjustment of I_r , I_{sd} , I_i , I_g , t_r , t_{sd} , t_g directly on the MCCB or via software/App (p. 43) For connection to the App add a Bluetooth communication key Cat.No 0 283 10 (p. 50) Green indicator lamp Connector for test unit Logical selectivity 4P version: adjustment of neutral on front panel or by software or App For correct operation and power supply of metering function, see p. 50
			Breaking capacity Icu 36 kA (400 V~)
			I_n (A)
1	4 228 60	4 228 65	250
1	4 228 61	4 228 66	320
1	4 228 62	4 228 67	400
1	4 228 63	4 228 68	500
1	4 228 64	4 228 69	630
			Breaking capacity Icu 50 kA (400 V~)
1	4 228 70	4 228 75	250
1	4 228 71	4 228 76	320
1	4 228 72	4 228 77	400
1	4 228 73	4 228 78	500
1	4 228 74	4 228 79	630
			Breaking capacity Icu 70 kA (400 V~)
1	4 228 80	4 228 85	250
1	4 228 81	4 228 86	320
1	4 228 82	4 228 87	400
1	4 228 83	4 228 88	500
1	4 228 84	4 228 89	630
			Breaking capacity Icu 100 kA (400 V~)
1	4 228 90	4 228 95	250
1	4 228 91	4 228 96	320
1	4 228 92	4 228 97	400
1	4 228 93	4 228 98	500
1	4 228 94	4 228 99	630

DPX³ 630

earth leakage modules



0 260 63

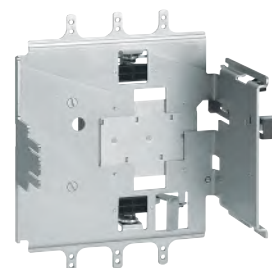
Pack	Cat.Nos		Earth leakage modules
			Can be fitted onto DPX ³ /DPX ³ -I 630 Adjustable, sealable sensitivity: 0.03 - 0.3 - 1 - 3 A Adjustable, time delay: 0 - 0.3 - 1 - 3 s Test push-button Reset push-button Remote earth fault signalling contact Switch for mechanical tests (installation insulation test) Mounted underneath 230-500 V~
	3P	4P	
1	0 260 60	0 260 61	Standard In (A) 400
1	0 260 64	0 260 65	630
	4P		LED version Monitors the isolation state of the installation via a series of LEDs In (A) 400
1	0 260 63		630
1	0 260 67		

DPX³ 630

equipment and accessories



4 222 22



4 222 32

Pack	Cat.Nos		Plug-in version
			A plug-in is a DPX ³ fitted with special terminals and mounted on a plug-in base
	3P	4P	Special terminals for plug-in/draw-out base Set of incoming and outgoing terminals (6 terminals for 3P DPX ³ or 8 terminals for 4P DPX ³)
1	4 222 20	4 222 21	Bases for DPX³ only Accept DPX ³ /DPX ³ -I fitted with special terminals Front terminal mounting base Flat rear terminal mounting base
1	4 222 22	4 222 23	Bases for DPX³ with earth leakage module Front terminal mounting base Flat rear terminal mounting base
1	4 222 24	4 222 25	Accessories Set of 2 extractor handle Set of connectors (24-pin)
	4P		
1	4 222 26		
1	4 222 27		
			Draw-out version A DPX ³ draw-out version is a plug-in DPX ³ fitted with a "Debro-lift" mechanism which can be used to withdraw the DPX ³ while keeping it on its base
			"Debro-lift" mechanism Supplied with a rigid slide and handle for drawing-out For DPX ³ base only For DPX ³ base with earth leakage module
1	3P	4P	Key-lock for "Debro-lift" mechanism Enable locking of DPX ³ in drawn-out position Flat key n°HBA90GPS6149 Star key n°ABA90GEL6149
1	4 222 31	4 222 32	One key for DPX ³ only
1	4 222 33	4 222 33	One key for motorised DPX ³ or with rotary handle
	Flat key	Star key	
1	0 265 76	0 263 48	Accessories for "Debro-lift" mechanism Handle for drawing-out Signalling contact (plugged-in/drawn-out)
1	0 265 78	0 265 77	
			Auxiliary contacts Automatic auxiliary contacts for DPX ³ draw-out version (up to 2 contacts by DPX ³)
1	0 265 75		
1	0 265 74		
			Plates for transfer switches Factory assembled A transfer switch plate is composed of one plate with interlock for 2 devices Plate for MCCB or trip-free switch fixed version Plate for MCCB or trip-free switch plug-in and draw-out version
1	0 264 09		
1	0 264 04		

DPX³ 630

equipment and accessories (continued)



4 226 30



0 261 40



0 262 50



0 262 48

Pack	Cat.Nos	Rotary handles
1	4 210 62	Direct on DPX³
1	4 210 75	Standard (grey) For emergency use (red/yellow) - can be fitted on Cat.Nos 0 262 22, 0 262 41 or 0 262 81
		Vari-depth handle IP 54
		Comprising: connection rod, bracket, self-adhesive drilling template, mounting accessories and door lock mechanism
1	4 210 73	Standard (grey)
1	4 210 76	For emergency use (red/yellow) can be fitted on
		Locking accessories
		For vary-depth handle
1	4 228 04	Key barrel and Ronis key EL43525
1	4 228 05	Key barrel and Ronis key EL43363
1	0 262 93	Key barrel and flat key N° ABA90GEL6149
1	0 262 94	Key barrel and star key N° HBA90GPS6149
		Motor-driven handles
		Front installation
1	4 226 30	230 V~
		Front installation - fast closing
1	0 261 40	24 V~ / =
1	0 261 41	48 V~ / =
1	0 261 44	230 V~
		Accessories
1	0 261 59	Lock and flat key N° ABA90GEL6149
1	0 261 58	Lock and star key N° HBA90GPS6149

Pack	Cat.Nos	Accessories
1	0 262 30	Insulated shields (phase barriers) Set of 3
1	0 262 44 0 262 45	Sealable terminal shields Set of 2
1	0 262 40	Padlock For locking in "OPEN" position
1	0 262 50	Cage terminals Set of 4 terminals for cable 300 mm ² max. (rigid) or 240 mm ² max. (flexible)
1	0 262 51	Set of 4 high-capacity terminals for cable 2 x 240 mm ² (rigid) or 2 x 185 mm ² (flexible)
		Adaptor for lug For connecting bare cables with wide lugs
1	0 262 46	Set of 4 adaptors + insulated shields
1	0 262 47	Extended front terminals Set of 4
1	0 262 48 0 262 49	Spreaders Set of incoming or outgoing spreaders
		Rear terminals Used to convert the fixed version with front terminals to the fixed version with rear terminals
1	0 263 52 0 263 53	Set of incoming or outgoing flat terminals
1	4 222 34 4 222 35	IP 20 terminal covers Set of 2 terminal covers



For more spare parts and accessories,
see e-catalogue

DPX³ 1600 thermal magnetic release MCCBs

from 630 to 1250 A - fixing on plate



4 222 78



4 222 83

Dimensions **p. 64-65**
Electrical characteristics **p. 66**

Moulded case MCCBs for switching, control isolation and protection of low voltage electrical lines

Can be fitted with auxiliaries (p. 50)

Can be used with residual current relays (p. 51)

Supplied complete with:

- connection plates for bars

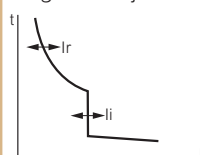
- insulated shields (phase barriers)

Conform to IEC 60947-2 - Sealable adjustment

Can be mounted on plate in XL³ DO cabinets and enclosures

MCCBs thermal magnetic release fixed version

Thermal adjustable from 0.8 to 1 In
Magnetic adjustable from 5 to 10 In



Breaking capacity Icu 36 kA (400 V~)

	3P	4P	In (A)
1	4 222 51	4 222 56	630
1	4 222 52	4 222 57	800
1	4 222 53	4 222 58	1000
1	4 222 54	4 222 59	1250

Breaking capacity Icu 50 kA (400 V~)

	3P	4P	In (A)
1	4 222 63	4 222 68	630
1	4 222 64	4 222 69	800
1	4 222 65	4 222 70	1000
1	4 222 66	4 222 71	1250

Breaking capacity Icu 70 kA (400 V~)

	3P	4P	In (A)
1	4 222 75	4 222 80	630
1	4 222 76	4 222 81	800
1	4 222 77	4 222 82	1000
1	4 222 78	4 222 83	1250

Breaking capacity Icu 100 kA (400 V~)

	3P	4P	In (A)
1	4 222 87	4 222 92	630
1	4 222 88	4 222 93	800
1	4 222 89	4 222 94	1000
1	4 222 90	4 222 95	1250

Breaking capacity Icu 100 kA (400 V~)

	3P	4P	In (A)
1	4 222 96		1000
1	4 222 97		1250

DPX³ 1600

S1 electronic release MCCBs from 630 to 1600 A - fixing on plate



4 225 59

Dimensions **p. 64-65**
Electrical characteristics **p. 66**

Moulded case MCCBs for switching, control isolation and protection of low voltage electrical lines

Can be fitted with auxiliaries (p. 50)

Can be used with residual current relays (p. 51)

Do not accept DPX³ electronic interface for Modbus Cat.No 4 210 75 (p. 50)

Supplied complete with:

- connection plates for bars

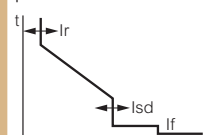
- insulated shields (phase barriers)

Conform to IEC 60947-2 - Sealable adjustment

Can be mounted on plate in XL³ DO cabinets and enclosures

MCCBs S1 electronic release fixed version

Adjustment of Ir, Isd (p. 43)
Instantaneous protection If = 20 kA
Green indicator lamp
Connector for test unit
Dynamic selectivity
4P version: adjustment of neutral on front panel



Breaking capacity Icu 36 kA (400 V~)

	3P	4P	In (A)
1	4 225 39	4 225 45	630
1	4 225 40	4 225 46	800
1	4 225 41	4 225 47	1000
1	4 225 42	4 225 48	1250
1	4 225 43	4 225 49	1600

Breaking capacity Icu 50 kA (400 V~)

	3P	4P	In (A)
1	4 225 51	4 225 57	630
1	4 225 52	4 225 58	800
1	4 225 53	4 225 59	1000
1	4 225 54	4 225 60	1250
1	4 225 55	4 225 61	1600

Breaking capacity Icu 70 kA (400 V~)

	3P	4P	In (A)
1	4 225 63	4 225 69	630
1	4 225 64	4 225 70	800
1	4 225 65	4 225 71	1000
1	4 225 66	4 225 72	1250
1	4 225 67	4 225 73	1600

Breaking capacity Icu 100 kA (400 V~)

	3P	4P	In (A)
1	4 225 75	4 225 81	630
1	4 225 76	4 225 82	800
1	4 225 77	4 225 83	1000
1	4 225 78	4 225 84	1250

DPX³-I 1600 trip-free switches
p. 52

DPX³ 1600 magnetic release only
p. 53

DPX³ 1600

S10 configurable electronic release MCCBs from 630 to 1600 A - fixing on plate



4 229 53



4 229 58



Dimensions **p. 64-65**

Electrical characteristics **p. 66**

Moulded case MCCBs for switching, control isolation and protection of low voltage electrical lines

Can be fitted with auxiliaries (p. 50)

Can be used with residual current relays (p. 51)

Supplied complete with:

- connection plates for bars
- insulated shields (phase barriers)

Conform to IEC 60947-2 - Sealable adjustment

Can be mounted on plate in XL³ DO cabinets and enclosures

Pack	Cat.Nos		MCCBs S10 configurable electronic release fixed version
	3P	4P	
			Adjustment of I_r , I_{sd} , I_i , I_g , t_r , t_{sd} , t_g directly on the MCCB or via software/App (p. 43) For connection to the App add a Bluetooth communication key Cat.No 0 283 10 (p. 50) Green indicator lamp Connector for test unit Logical selectivity 4P version: adjustment of neutral on front panel or by software or App
			Breaking capacity I_{cu} 36 kA (400 V~)
			I_n (A)
1	4 229 00	4 229 01	500
1	4 229 20	4 229 25	630
1	4 229 21	4 229 26	800
1	4 229 22	4 229 27	1000
1	4 229 23	4 229 28	1250
1	4 229 24	4 229 29	1600
			Breaking capacity I_{cu} 50 kA (400 V~)
1	4 229 02	4 229 03	500
1	4 229 30	4 229 35	630
1	4 229 31	4 229 36	800
1	4 229 32	4 229 37	1000
1	4 229 33	4 229 38	1250
1	4 229 34	4 229 39	1600
			Breaking capacity I_{cu} 70 kA (400 V~)
1	4 229 04	4 229 05	500
1	4 229 40	4 229 45	630
1	4 229 41	4 229 46	800
1	4 229 42	4 229 47	1000
1	4 229 43	4 229 48	1250
1	4 229 44	4 229 49	1600
			Breaking capacity I_{cu} 100 kA (400 V~)
1	4 229 06	4 229 07	500
1	4 229 50	4 229 55	630
1	4 229 51	4 229 56	800
1	4 229 52	4 229 57	1000
1	4 229 53	4 229 58	1250

Pack	Cat.Nos		MCCBs S10 configurable electronic release with energy metering central unit fixed version
	3P	4P	
			Adjustment of I_r , I_{sd} , I_i , I_g , t_r , t_{sd} , t_g directly on the MCCB or via software/App (p. 43) For connection to the App add a Bluetooth communication key Cat.No 0 283 10 (p. 50) Green indicator lamp Connector for test unit Logical selectivity 4P version: adjustment of neutral on front panel or by software or App For correct operation and power supply of metering function, see p. 50
			Breaking capacity I_{cu} 36 kA (400 V~)
			I_n (A)
1	4 229 08	4 229 09	500
1	4 229 60	4 229 65	630
1	4 229 61	4 229 66	800
1	4 229 62	4 229 67	1000
1	4 229 63	4 229 68	1250
1	4 229 64	4 229 69	1600
			Breaking capacity I_{cu} 50 kA (400 V~)
1	4 229 10	4 229 11	500
1	4 229 70	4 229 75	630
1	4 229 71	4 229 76	800
1	4 229 72	4 229 77	1000
1	4 229 73	4 229 78	1250
1	4 229 74	4 229 79	1600
			Breaking capacity I_{cu} 70 kA (400 V~)
1	4 229 12	4 229 13	500
1	4 229 80	4 229 85	630
1	4 229 81	4 229 86	800
1	4 229 82	4 229 87	1000
1	4 229 83	4 229 88	1250
1	4 229 84	4 229 89	1600
			Breaking capacity I_{cu} 100 kA (400 V~)
1	4 229 14	4 229 15	500
1	4 229 90	4 229 95	630
1	4 229 91	4 229 96	800
1	4 229 92	4 229 97	1000
1	4 229 93	4 229 98	1250

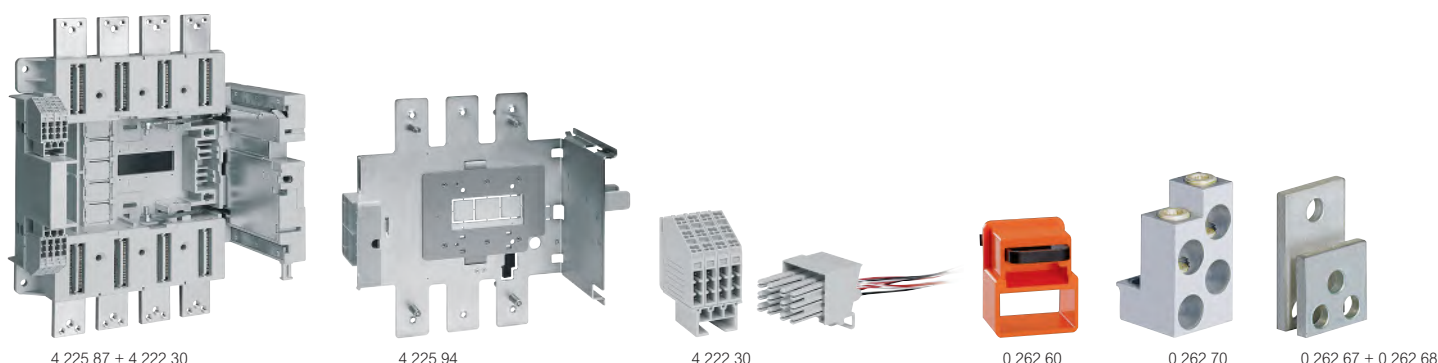


Power supply and supervision system

p. 50

DPX³ 1600

equipment and accessories



Pack	Cat.Nos	Draw-out version	Pack	Cat.Nos	Motor-driven handles
		<p>A DPX³ draw-out version is a DPX³ fitted with draw-out base and a "Debro-lift" mechanism which can be used to withdraw the DPX³ while keeping it on its base</p> <p>Draw-out base For DPX³ 1600 equipped with "Debro-lift" mechanism Cat.No 4 225 93 or 4 225 94 Front terminals Rear terminals</p> <p>Debro-lift mechanism For DPX³ 1600 To be fitted on a DPX³ 1600 fixed version in order to obtain the movable part of a draw-out circuit breaker</p> <p>Key-lock for "Debro-lift" mechanism Enable locking of DPX³ in drawn-out position Flat key n°HBA90GPS6149 Star key n°ABA90GEL6149 One key for DPX³ only Two key (one key supplied) for motorised DPX³ or with rotary handle</p> <p>Accessories for "Debro-lift" mechanism Handle for drawing-out Signalling contact (plugged-in/drawn-out)</p> <p>Auxiliary contacts Automatic auxiliary contacts for DPX³ draw-out version (up to 2 contacts by DPX³)</p>			<p>Factory assembled Front operated 230 V~</p> <p>Customer assembled Front operated 24 V~ / = for I_n ≤ 1250 A 48 V~ / = for I_n ≤ 1250 A 110 V~ / = for I_n ≤ 1250 A 230 V~ / = for I_n ≤ 1250 A 24 V~ / = for I_n = 1600 A 48 V~ / = for I_n = 1600 A 110 V~ / = for I_n = 1600 A 230 V~ / = for I_n = 1600 A</p> <p>Locking accessories Key and flat key N° ABA90GEL6149 Key and star key N° HBA90GPS6149</p>
1	3P 4 225 86 4P 4 225 87		1	0 261 54	
1	4 225 88 4 225 89		1	0 261 24	
1	4 225 93 4 225 94		1	0 261 25	
1	0 265 76 0 263 48		1	0 261 26	
1	0 265 80 0 265 79		1	0 261 23	
1	0 265 75		1	0 261 19	
1	0 265 74		1	0 261 28	
1	4 222 30		1	0 261 29	
1	0 264 10		1	0 261 27	
1	0 264 05		1	0 261 59	
1	0 262 61		1	0 261 58	
1	0 262 83				
1	0 262 84				
1	0 262 93				
1	0 262 94				
		<p>Plates for transfer switches A transfer switch plate is composed of one plate with interlock for 2 devices Plate for MCCBs or trip-free switch fixed version Plate for MCCBs or trip-free switch plug-in and draw-out version</p> <p>Rotary handles Direct on DPX³ Standard (black) Vari-depth handle IP 55 Comprising: connection rod, bracket, self-adhesive drilling template, mounting accessories and door lock mechanism Standard (black) For emergency use (red/yellow)</p> <p>Locking accessories Key barrel and flat key N° ABA90GEL6149 Key barrel and star key N° HBA90GPS6149</p>			<p>Accessories Insulated shields (phase barriers) Used to isolate the connections between each pole Set of 3</p> <p>Sealable terminal shields Set of 2</p> <p>Padlock For locking in "open" position</p> <p>Cage terminals Set of 1 terminal for cables without lug 2 x 240 mm² for rigid cable or 2 x 185 mm² for flexible cable Set of 1 high-capacity terminal for cables without lug 4 x 240 mm² for rigid cable 4 x 185 mm² for flexible cable</p> <p>Extended front terminals Set for 1 pole Terminals for 630 - 1250 A (2 bars max. per pole) Terminals for 1600 A (3 bars max. per pole)</p> <p>Spreaders Set of incoming or outgoing spreaders</p> <p>Rear terminals Used to convert the fixed version with front terminals to the fixed version with rear terminals Set of incoming or outgoing rear terminals Short terminals Long terminals</p> <p>IP 20 terminal covers Set of 2 terminal covers</p> <p>External neutral External neutral</p>
			1	0 262 66	
			1	3P 0 262 64 4P 0 262 65	
			1	0 262 60	
			1	0 262 69	
			1	0 262 70	
			1	0 262 67	
			1	0 262 68	
			1	3P 0 262 73 4P 0 262 74	
			1	0 263 80 0 263 82	
			1	0 263 81 0 263 83	
			1	4 225 90 4 225 91	
			1	4 225 92	

DPX³ 630 and 1600

common auxiliaries



4 222 42



4 222 48

Pack Cat.Nos Auxiliary contact or fault signal

1	4 210 11	For signalling the state of the contacts or opening of the MCCB on a fault For DPX ³ /DPX ³ -I Changeover switch 3 A - 240 V~
---	----------	---

Shunt releases

Allow remote tripping of a DPX³ or DPX³-I 630 and DPX³ 1600

Shunt inrush power 300 VA

1	4 222 39	Coil voltage 24 V~ / =
1	4 222 40	Coil voltage 48 V~ / =
1	4 222 41	Coil voltage 110 V~ / =
1	4 222 42	Coil voltage 230 V~ / =
1	4 222 43	Coil voltage 400 V~ / =

Undervoltage releases

Allow remote tripping of a DPX³ or DPX³-I 630 and 1600

Consumption: 5 VA

1	4 222 44	24 V=
1	4 222 45	24 V~
1	4 222 46	48 V=
1	4 222 47	110-125 V~
1	4 222 48	220-240 V~
1	4 222 49	380-415 V~

Time-lag (800 ms) undervoltage release

Allow remote tripping of a DPX³/DPX³-I 630 or 1600 Prevents false tripping in the event of power supply microbreaks

Time-lag modules

Number of modules

1	0 261 90	230 V~	3
1	0 261 91	400 V~	3

Release

To be equipped with a time-lag module Cat.Nos 0 261 90/91

1	4 226 23	For DPX ³ /DPX ³ -I 630 and 1600
---	----------	--

DPX³ 160 / 250 / 250 HP / 630 / 1600

power supply and supervision system



4 238 90



0 283 10



0 261 56

Pack Cat.Nos Auxiliary power supply for DPX³

1	4 210 83	For supplying DPX ³ electronic units when the circuit breaker is open or when the current passing through it is insufficient
---	----------	---

Input voltage 24 V~ / =

2 modules

Output 250 mA: can supply several circuit breakers

Consumption:

- Electronic DPX³: 50 mA

- Electronic DPX³ with measurement: 62.5 mA

- Electronic DPX³ with residual current protection: 50 mA

- Electronic DPX³ with residual current protection and measurement: 62.5 mA

Communication interfaces

DPX³ electronic interface - RS485 Modbus

For connecting electronic DPX³ (except DPX³ 630 S1 electronic release and DPX³ 1600 S1 electronic release) to an RS485 Modbus communication network.

All the information managed by the circuit breaker's electronic card will be shared on the Modbus network

Dimension: 2 modules

Power supply: 24 V~ / =

RS 485 link (2-wire)

Address, speed and coding can be modified with configurator kit

DPX³ electronic interface - EMS CX³

For connecting electronic DPX³ S10 (250HP, 630, 1600) to an EMS communication network

All the informations managed by circuit breaker's electronic card will be shared on the EMS network

Dimension: 1 module

Power supply: with EMS CX³ power supply module Cat. No 4 149 45

Address can be modified and set locally by DIP switches or remotely with the help of the EMS configurator software

Bluetooth communication key

1	0 283 10 ¹	USB key for BLE communication with electronic DPX ³ S10 (250 HP, 630, 1600) to configure, monitor and manage it remotely through App Connection port USB on front of the circuit breaker
---	-----------------------	---

Modular power supply

1	Bticino BT-E49	230 V~ - 27 V= - 0.6 A 2 modules
---	-------------------	-------------------------------------

Door mounting touch screen

1	0 261 56	Optional touch screen allowing to: - visualize information coming from DX ³ , DPX ³ and DMX ³ protection devices and EMDX ³ multi-function measuring units and - control protection devices equipped with the universal control module Cat.No 4 149 32 Can manage up to 9 devices Power supply: 18-30 V = IP connection For mounting on door or solid faceplate Door cut: 92 x 92 mm
---	----------	---

1: EnerUp + Project App for smartphone and tablet available on Apple Store and Google Play
Configuration, monitoring and management software (PCS) available for download via e-catalogue (does not require the use of Bluetooth communication key Cat.No 0 283 10)

Residual current relay and coils



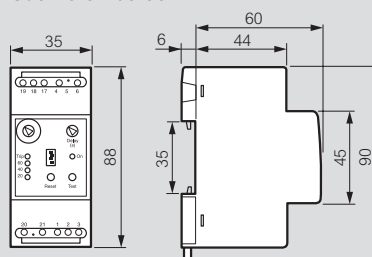
Add residual current protection to DPX³ trip-free switches and DPX³ MCCBs equipped with release

Pack	Cat.Nos	Residual current relay
1	0 260 88	<p>Detects fault currents, and, when used with a shunt trip or an undervoltage release, it gives the trip command to a MCCB or a switch</p> <ul style="list-style-type: none"> Comprises: <ul style="list-style-type: none"> a tinged, sealable window an auxiliary contact a green Led indicating energisation 3 yellow Leds indicating respectively the max. phase earth insulation current: 20, 40 and 60 % a red Led indicating Fixed: exceeding of the insulation fault current value Flashing: breaking of one of the connections between coils and relays For use with coils: <ul style="list-style-type: none"> Ø35 and 80 mm Adjustable sensitivity: 0.03, 0.05, 0.075, 0.1, 0.15, 0.2, 0.3, 0.5, 0.75, 1, 1.5, 2, 3, 5, 7.5, 10, 15, 20, 30 A Adjustable sensitivity: 0.3, 0.5, 0.75, 1, 1.5, 2, 3, 5, 7.5, 10, 15, 20, 30 A Adjustable sensitivity: 0.5, 0.75, 1, 1.5, 2, 3, 5, 7.5, 10, 15, 20, 30 A Adjustable sensitivity: 1, 1.5, 2, 3, 5, 7.5, 10, 15, 20, 30 A Adjustable trip: 0, 0.15, 0.25, 0.5, 1, 2.5, 5 seconds Supply voltage: 230/240 V - 50/60 Hz
		Number of modules: 2
		Coils
1	0 260 92	Coil Ø35 mm
1	0 260 93	Coil Ø80 mm
1	0 260 94	Coil Ø110 mm
1	0 260 95	Coil Ø140 mm
1	0 260 96	Coil Ø210 mm
1	0 260 97	Coil Ø150 mm - open
1	0 260 98	Coil Ø310 mm - open

Residual current relay and coils

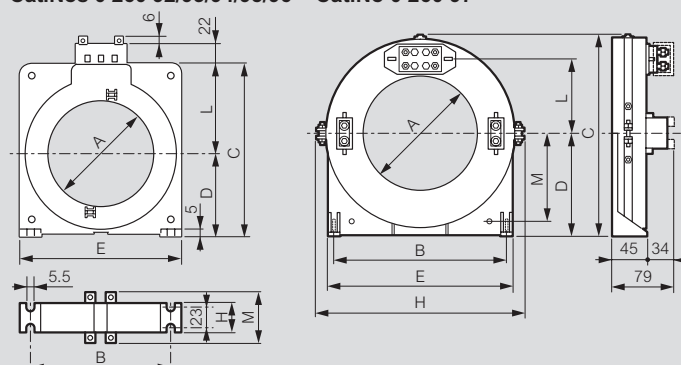
Residual current relay

Cat.No 0 260 88



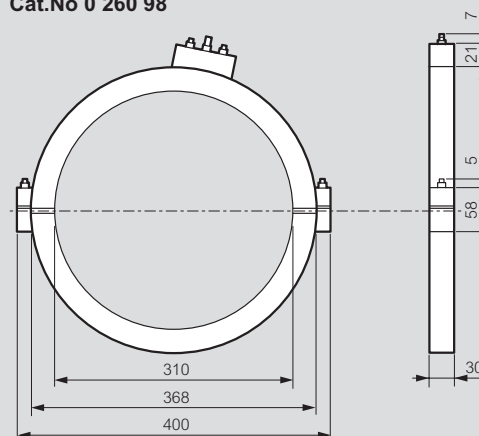
Coils

Cat.Nos 0 260 92/93/94/95/96 Cat.No 0 260 97



Cat.Nos	A	B	C	D	E	H	L	M
0 260 92	35	75	85	42	92	36	43	56
0 260 93	80	108	132	67	125	36	65	56
0 260 94	110	148	170	86	165	36	84	56
0 260 95	140	177	206	104	200	36	102	56
0 260 96	210	270	295	150	290	44	145	64
0 260 97	150	225	259	133	245	275	95	113

Cat.No 0 260 98



DPX³-I trip-free switches

160 to 1600 A



Dimensions **p. 56, 50 - 60 and 62 - 65**

Trip-free switches for on-load circuit breaking and isolation of low voltage electrical circuits
Can be associated to earth leakage modules or to corresponding DPX³ residual current relays
Conform to IEC 60947-3
Category of use AC 23 A
Connection identical to corresponding DPX³

Pack	Cat.Nos	DPX ³ -I 160
1	3P 4 201 98 4P 4 201 99	In (A) 160 Mounting on rail with plate Cat.No 4 210 71 (p. 26)
1	4P with earth leakage module 4 201 97	160 Mounting on rail with plate Cat.No 4 210 73 (p. 26)
1	3P 4 202 99 4P 4 203 00	DPX ³ -I 250 In (A) 250 Mounting on rail with plate Cat.No 4 210 72 (p. 30)
1	4P with earth leakage module 4 202 98	250 Mounting on rail with plate Cat.No 4 210 74 (p. 30)
1	3P 4 231 84 4P 4 231 85	DPX ³ -I 125 HP In (A) 125
1	4 231 87	125 with earth leakage module
1	3P 4 231 88 4P 4 231 89	DPX ³ -I 160HP In (A) 160
1	4 231 91	160 with earth leakage module
1	3P 4 231 80 4P 4 231 81	DPX ³ -I 250 HP In (A) 250
1	4 231 83	250 with earth leakage module
1	3P 4 222 16 4P 4 222 18	DPX ³ -I 630 In (A) 400
1	4 222 17 4 222 19	630
1	3P 4 224 90 4P 4 224 94	DPX ³ -I 1600 In (A) 630
1	4 224 91 4 224 95	800
1	4 224 92 4 224 96	1250
1	4 224 93 4 224 97	1600

DPX³ magnetic release only

MCCBs from 16 to 1250 A for motor protection

Dimensions **p. 56**
Electrical characteristics **see e-catalogue**

Moulded case MCCBs for switching, control isolation and protection of three-phase motors
Can be fitted with auxiliaries (p. 31)
Supplied with: fixing screws and insulated shields (phase barriers)
Conform to IEC 60947-2

Pack	Cat.Nos	DPX ³ 160
		Magnetic fixed Can be mounted on rail plate in XL ³ DO cabinets and enclosures Supplied with cage terminals 70 mm ² max.flexible cable or 95 mm ² max. rigid cable with accessories
		Breaking capacity Icu 16 kA (400 V~)
	3P In (A)	
1	4 207 10	16
1	4 207 11	25
1	4 207 12	50
1	4 207 13	63
		Breaking capacity Icu 25 kA (400 V~)
1	4 207 14	16
1	4 207 15	25
1	4 207 16	50
1	4 207 17	63
		DPX ³ 250
		Magnetic fixed Can be mounted on rail plate in XL ³ DO cabinets and enclosures Supplied with cage terminals 95 mm ² max.flexible cable or 120 mm ² max. rigid cable with accessories
		Breaking capacity Icu 36 kA (400 V~)
	3P In (A)	
1	4 207 18	100
1	4 207 19	160
1	4 207 20	200
1	4 207 21	250
1	3P+N 8 002 49	250
1	4P 8 002 59	250
		Breaking capacity Icu 70 kA (400 V~)
1	3P 4 207 22	100
1	4 207 23	160
1	4 207 24	200
1	4 207 25	250

DPX³ magnetic release only

MCCBs from 16 to 1250 A for motor protection (continued)



4 239 33



4 239 45



Dimensions **p. 59 and 62 - 65**
Electrical characteristics **see e-catalogue**

Moulded case MCCBs for switching, control isolation and protection of three-phase motors

Can be fitted with auxiliaries (p. 41 and 50)

Supplied with: screws for connections, fixing screws and insulated shields (phase barriers)

Conform to IEC 60947-2

Pack	Cat.Nos		DPX ³ 250 HP
			Magnetic adjustable from 6 to 14 In Can be mounted on plate in XL ³ DO cabinets and enclosures
	3P	4P	Breaking capacity Icu 36 kA (400 V~)
			In (A)
1	4 239 01	4 239 13	6.3
1	4 239 02	4 239 14	12.5
1	4 239 03	4 239 15	25
1	4 239 04	4 239 16	32
1	4 239 05	4 239 17	50
1	4 239 06	4 239 18	80
1	4 239 07	4 239 19	100
1	4 239 08	4 239 20	160
1	4 239 09	4 239 21	220
			Breaking capacity Icu 50 kA (400 V~)
1	4 239 25	4 239 37	6.3
1	4 239 26	4 239 38	12.5
1	4 239 27	4 239 39	25
1	4 239 28	4 239 40	32
1	4 239 29	4 239 41	50
1	4 239 30	4 239 42	80
1	4 239 31	4 239 43	100
1	4 239 32	4 239 44	160
1	4 239 33	4 239 45	220
			Breaking capacity Icu 70 kA (400 V~)
1	4 239 49	4 239 61	6.3
1	4 239 50	4 239 62	12.5
1	4 239 51	4 239 63	25
1	4 239 52	4 239 64	32
1	4 239 53	4 239 65	50
1	4 239 54	4 239 66	80
1	4 239 55	4 239 67	100
1	4 239 56	4 239 68	160
1	4 239 57	4 239 69	220
			Breaking capacity Icu 100 kA (400 V~)
1	4 239 73	4 239 85	6.3
1	4 239 74	4 239 86	12.5
1	4 239 75	4 239 87	25
1	4 239 76	4 239 88	32
1	4 239 77	4 239 89	50
1	4 239 78	4 239 90	80
1	4 239 79	4 239 91	100
1	4 239 80	4 239 92	160
1	4 239 81	4 239 93	220

Pack	Cat.Nos		DPX ³ 630
			Magnetic adjustable up to 10 In Can be mounted on plate in XL ³ DO cabinets and enclosures
	3P	4P	Breaking capacity Icu 36 kA (400 V~)
			In (A)
1	4 226 08		320 with electronic release
1	4 225 98	4 226 16	400
1	4 226 09		400 with electronic release
1	4 225 99		500
1	4 226 00	4 226 17	630
			Breaking capacity Icu 70 kA (400 V~)
1	4 226 10		320 with electronic release
1	4 226 01	4 226 18	400
1	4 226 11		400 with electronic release
1	4 226 02		500
1	4 226 03	4 226 19	630
			DPX³ 1600
			Magnetic adjustable up to 10 In Can be mounted on plate in XL ³ DO cabinets and enclosures
	3P	4P	Breaking capacity Icu 50 kA (400 V~)
			In (A)
1	4 226 04	4 226 12	800
1	4 226 05	4 226 13	1000
			Breaking capacity Icu 70 kA (400 V~)
1	4 226 06	4 226 14	800
1	4 226 07	4 226 15	1000

Automatic transfer switch control units



Technical characteristics and configuration software **see e-catalogue**

They can control transfer switching between sources, manage generator start/stop, control single phase, two-phase and three-phase networks, control phase-phase and phase-neutral voltages
For DPX³ and DMX³ circuit breakers and CTX³ contactors

Pack	Cat.Nos	Automatic transfer switch control units	Pack	Cat.Nos	Dual power supply selector
1	4 226 81 ¹	For standard management of 2 circuit breakers 6 programmable digital inputs and 7 programmable relay outputs LCD display IR communication port on the front panel for connection of USB or WiFi modules Cat.Nos 4 226 87/88 Can be configured with the help of front panel touch keys or of the Legrand dedicated software Power supply: 110-240 V~ IP40	1	4 226 86	Dual power supply selector measures and controls two supply voltages at its inputs (single phase, 230 V~) and selects the most adapted voltage for auxiliary circuits supply Equipped with 1 alarm contact, if no supply voltage can be selected within the limits
1	4 226 82 ¹	For advanced management of 2 circuit breakers 6 programmable digital inputs and 7 programmable relay outputs Can be equipped with maximum 2 plug-in modules between: - extension modules Cat.Nos 4 226 90/91/92 - opto-isolated RS485 communication interface Cat.No 4 226 89 LCD display IR communication port on the front panel for connection of USB or WiFi modules Cat.Nos 4 226 87/88 Can be configured with the help of front panel touch keys or of the Legrand dedicated software Power supply: 12-24 V= ; 110-240 V~ IP40	1	4 226 89	Plug-in modules Opto-isolated RS485 interface 4 opto-isolated static outputs 2 relay outputs, rated 5 A 250 V~ 2 opto-isolated digital inputs and 2 relay outputs rated 5 A 250 V~
1	4 226 83 ¹	For advanced management of 3 circuit breakers and 2 power sources 8 programmable digital inputs and 7 programmable relay outputs Can be equipped with maximum 3 plug-in extension modules between Cat.Nos 4 226 90/91/92 Integrated opto-isolated RS485 communication interface LCD display IR communication port on the front panel for connection of USB or WiFi modules Cat.Nos 4 226 87/88 Can be configured with the help of front panel touch keys or of the Legrand dedicated software Power supply: 12-24-48 V= ; 110-240 V~ IP65	1	4 226 87 ¹	Communication accessories These communication devices can be used to connect automatic transfer switch controllers to a computer; smartphone or tablet For programming, downloading data, diagnostics and upgrading the firmware USB front connector Computer connection cable with USB connector The computer identifies the connection as a standard USB connection. There is no need to switch off the controller power supply Wi-Fi front connector Wi-Fi connection device compatible with computers, smartphones and tablets There is no need to switch off the controller power supply
1	4 226 84 ¹	For advanced management of 5 circuit breakers and 3 power sources 12 programmable digital inputs and 11 programmable relay outputs Can be equipped with maximum 3 plug-in extension modules between Cat.Nos 4 226 90/91/92 Integrated opto-isolated RS485 communication interface LCD display IR communication port on the front panel for connection of USB or WiFi modules Cat.Nos 4 226 87/88 Can be configured with the help of front panel touch keys or of the Legrand dedicated software Power supply: 12-24-48 V= ; 110-240 V~ IP65 Must be factory configured to fit installation needs Please ask for ATS order form.	1	4 226 88 ¹	

¹: Configuration software available for download via e-catalogue
ACU Configurator app for smartphone and tablet available on Apple Store and Google Play

Automation control units for transfer switches

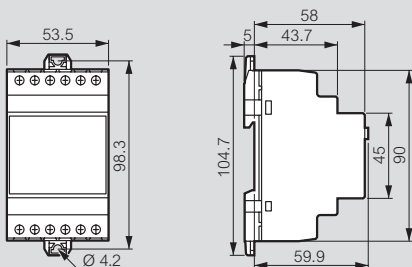
technical characteristics and dimensions

Technical characteristics

		Cat.Nos			
		4 226 81	4 226 82	4 226 83	4 226 84
Voltage Inputs	Ue max rated voltage	100-480 V~	100-480 V~	100-600 V~ L-L (346 V~ L-N)	100-600 V~ L-L (346 V~ L-N)
	Measuring range	50-576 V~ (L-L)	50-576 V~ (L-L)	50-720 V~ (L-L)	50-720 V~ (L-L)
	Frequency range	45...65 Hz 360...440 Hz	45...65 Hz 360...440 Hz	45...65 Hz 360...440 Hz	45...65 Hz 360...440 Hz
	Measurement type	True RMS value	True RMS value	True RMS value	True RMS value
	Connection modes	Single phase, two-phase or three-phase system with or without neutral	Single phase, two-phase or three-phase system with or without neutral	Single phase, two-phase or three-phase system with or without neutral	Single phase, two-phase or three-phase system with or without neutral
	Measuring error	± 0.25% f.s. ± 1 digit	± 0.25% f.s. ± 1 digit	± 0.25% f.s. ± 1 digit	± 0.25% f.s. ± 1 digit
Ambient conditions	Operating temperature	-30... +70 °C	-30... +70 °C	-30... +70 °C	-30... +70 °C
	Storage temperature	-30...+80 °C	-30...+80 °C	-30...+80 °C	-30...+80 °C
	Relativity humidity	80 % (IEC/EN 60068-2-78)	80 % (IEC/EN 60068-2-78)	80 % (IEC/EN 60068-2-78)	80 % (IEC/EN 60068-2-78)
	Maximum pollution degree	2	2	2	2
	Overvoltage category	3	3	3	3
	Measurement category	III	III	III	III
	Rated impulse withstand voltage	Uimp 7.3 kV	Uimp 7.3 kV	Uimp 7.3 kV	Uimp 7.3 kV
	Protection index	IP 40	IP 40	IP 65	IP 65
Functionalities	Inputs	6 programmables	6 programmables	8 programmables	12 programmables
	Outputs	7 relay programmables	7 relay programmables	7 relay programmables	11 relay programmables
	Expandability	No	Yes (2 modules)	Yes (3 modules)	Yes (3 modules)
	ModBus	No	Yes, with expansion module RS485	Yes, embedded RS485	Yes, embedded RS485
	Storage	No	Yes, 100 most recent events	Yes, 250 most recent events	Yes, 250 most recent events
	Programming	USB or WiFi (Direct on front panel or with comm module and Legrand software or App)			

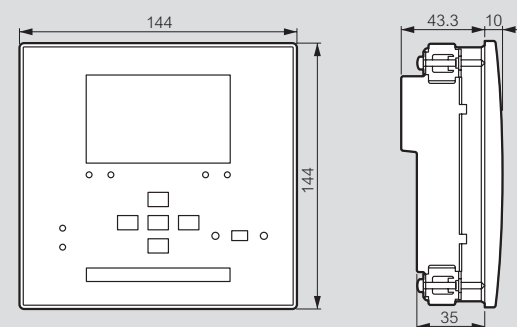
Dimensions

Cat.No 4 226 86

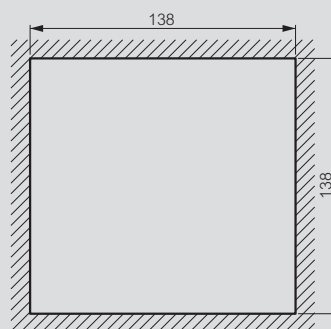


Dimensions (continued)

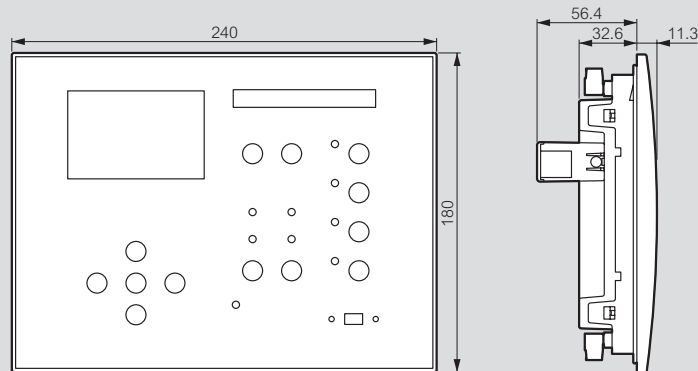
Cat.Nos 4 226 81/82



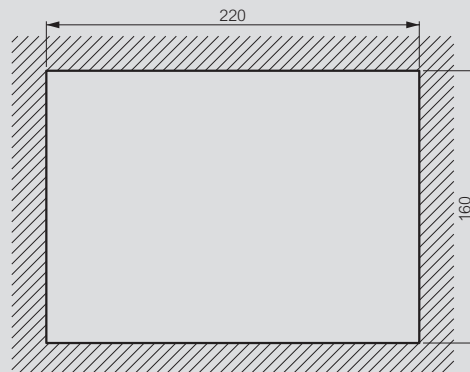
Door cut



Cat.Nos 4 226 83/84



Door cut

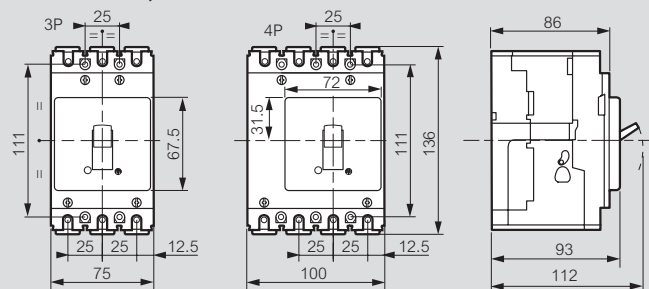


DPX³ 125/160 HP

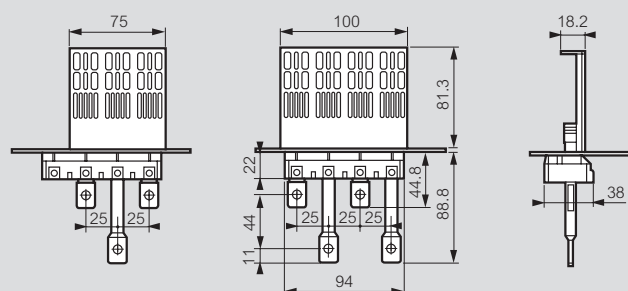
technical characteristics

Dimensions

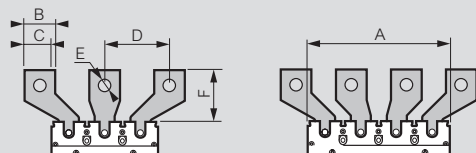
Fixed version, front terminals



Fixed version with rear terminals Cat.Nos 4 238 91/92

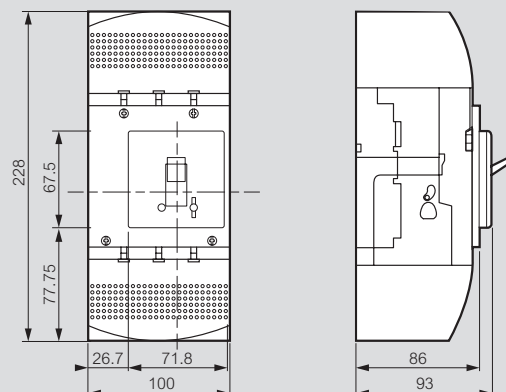


Spreaders Cat.Nos 4 238 88/89



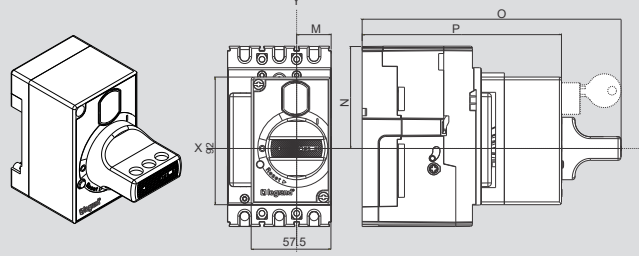
	A	B	C	D	E	F
3P	75	22	10	35.7	10.2	32
4P	100	22	10	32.2	10.2	32

Sealable terminal shields Cat.Nos 4 238 93/94



Rotary Handle Direct- DPX³ 125 HP

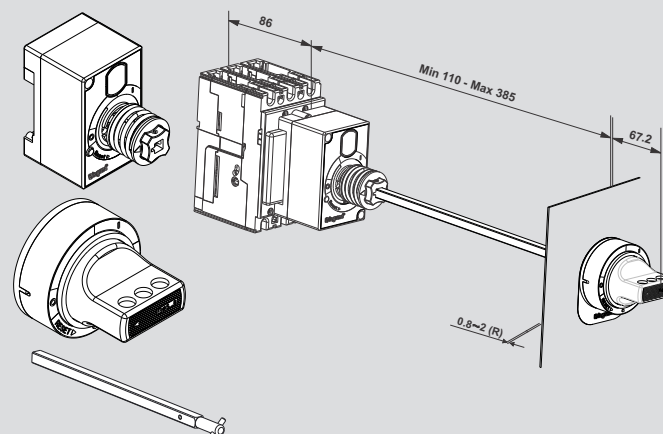
	DPX ³ 125 HP
Direct Handle	4 238 10
Direct Emergency Handle	4 238 11



Dimensions	DPX ³ 125 HP
Cat Ref	4 238 10, 4 238 11
M	25
N	74.5
O	187
P	143.5

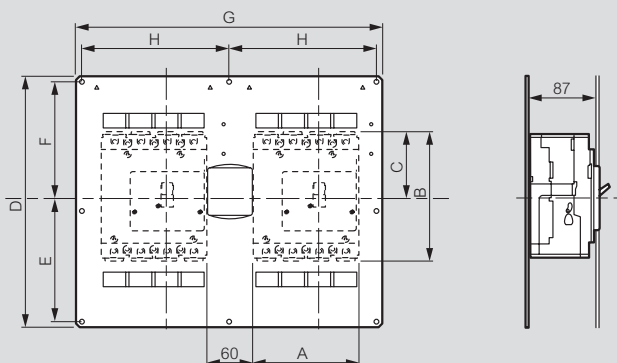
Vary Depth Handle DPX³ 125 HP

IP 54



	DPX ³ 125 HP
Vary Depth Handle	4 238 12
Vary Depth Emergency Handle	4 238 13

Mechanical interlock Cat.Nos 4 238 25/26/27



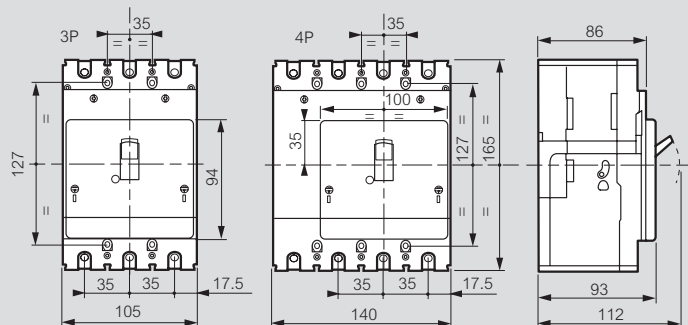
	A	B	C	D	E	F	G	H
3P	75	136	68	290	140	135	315	150
4P	100	136	68	290	140	135	315	150

DPX³ 250 HP

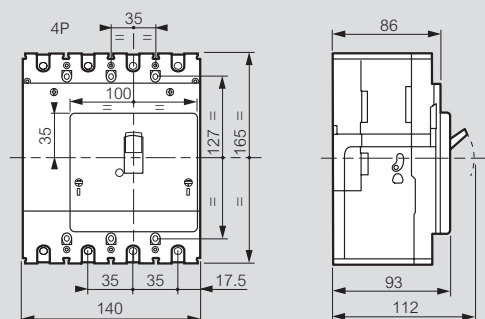
technical characteristics

Dimensions

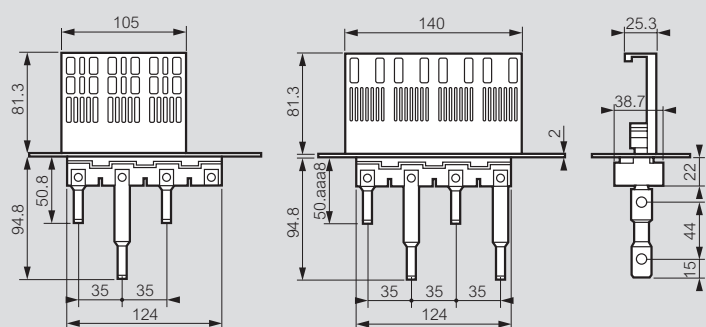
Fixed version, front terminals



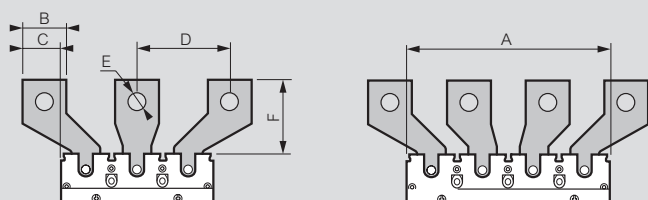
Fixed version with electronic earth leakage module



Fixed version with rear terminals Cat.Nos 4 238 91/92



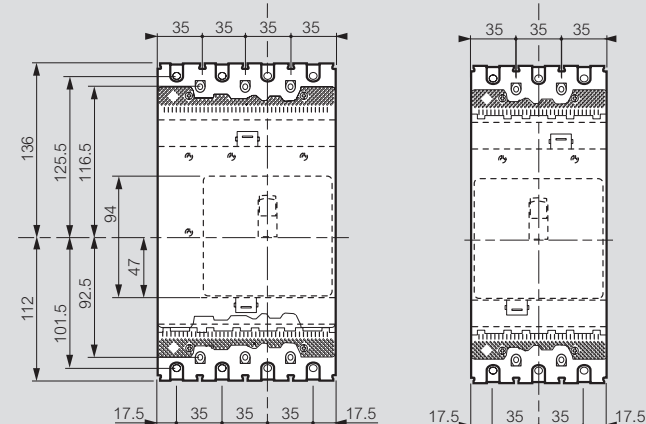
Spreaders Cat.Nos 4 238 23/24



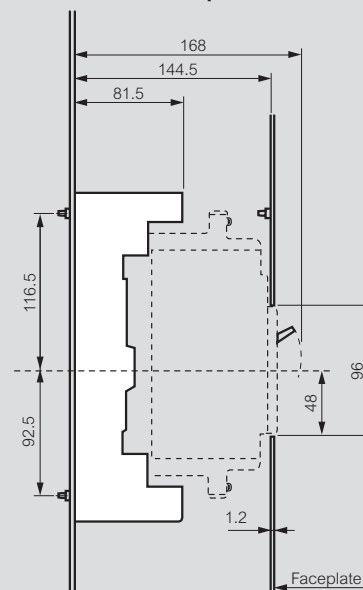
	A	B	C	D	E	F
3P	105	30	27	63.5	13	50
4P	140	30	27	54	13	50

Plug-in version front terminals

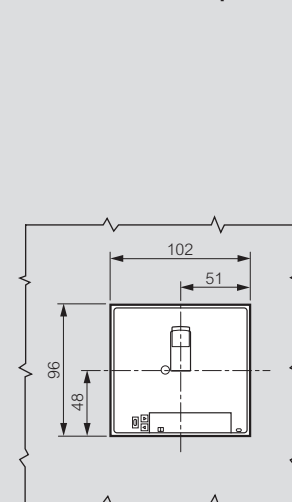
Front view



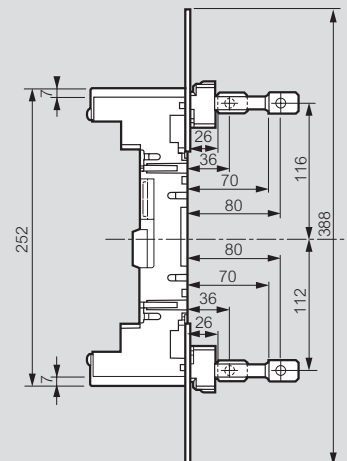
Side view with faceplate



Front view with faceplate



Plug-in base with rear terminals Cat.Nos 4 238 21/22



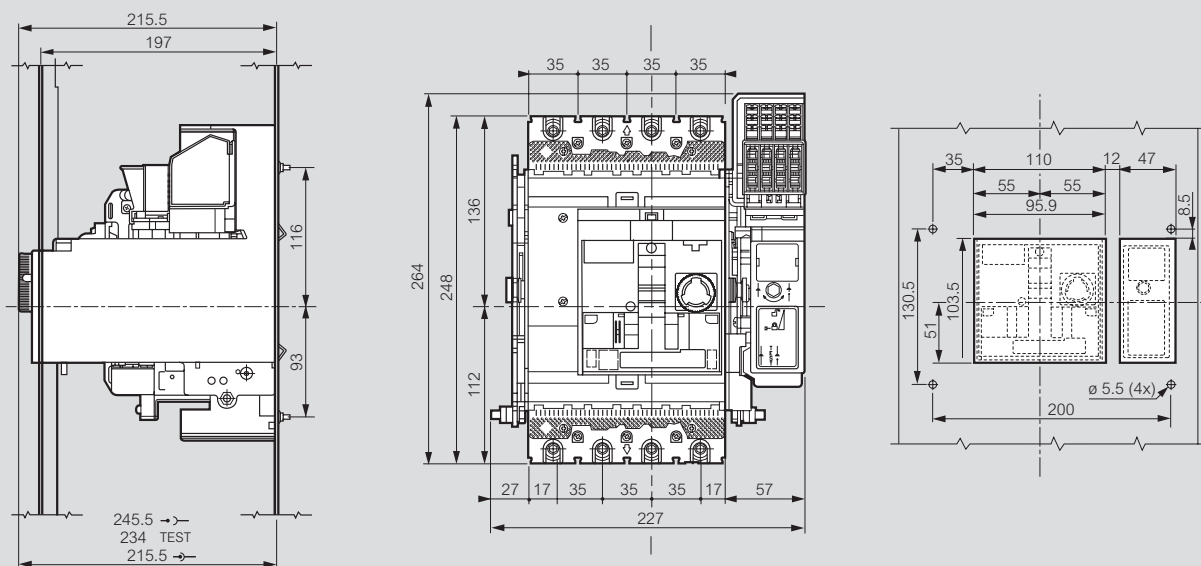
More dimensions for DPX³ 250 HP
see technical sheets

DPX³ 250 HP

technical charcateristics (continued)

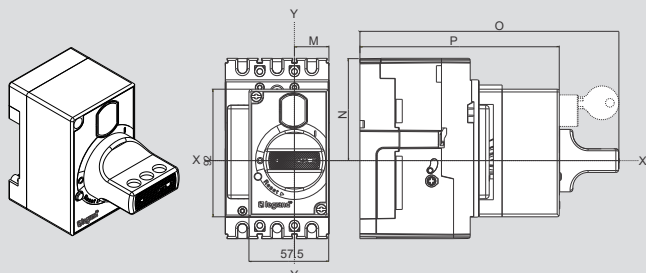
Dimensions

Draw-out version



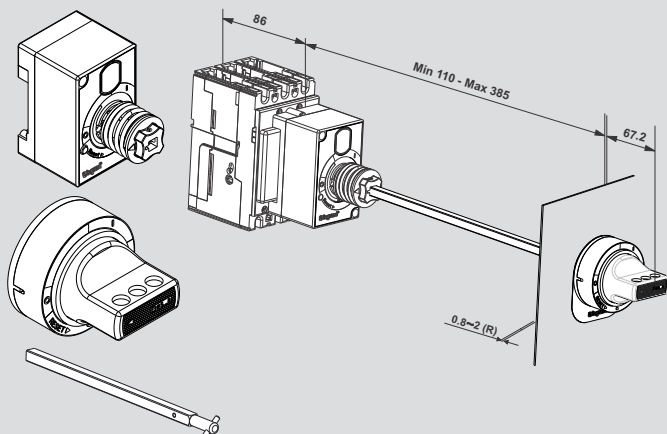
Rotary Handle Direct- DPX³ 250 HP

	DPX ³ 250 HP
Direct Handle	4 238 14
Direct Emergency Handle	4 238 15



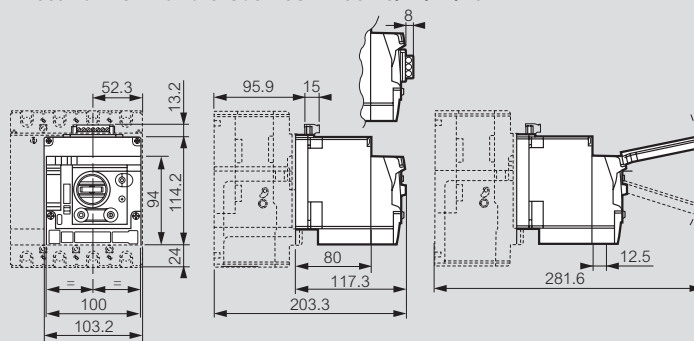
Dimensions	DPX ³ 250 HP
Cat Ref	4 238 14, 4 238 15
M	35
N	82.5
O	187
P	143.5

Vary Depth Handle DPX³ 250 HP IP 54

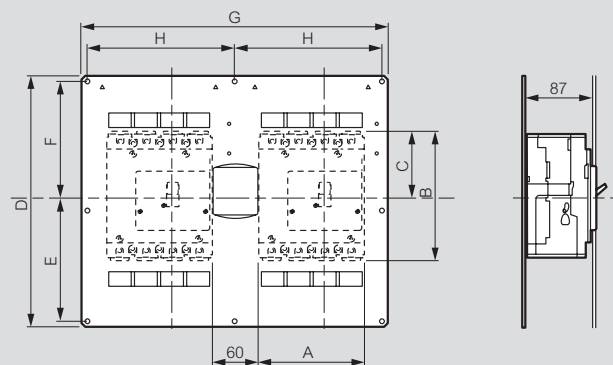


	DPX ³ 125 HP
Vary Depth Handle	4 238 16
Vary Depth Emergency Handle	4 238 17

Motor driven handle Cat.Nos 4 238 40/41/42/43



Mechanical interlock Cat.Nos 4 238 26/27/28



	A	B	C	D	E	F	G	H
3P	105	165	82.5	340	165	160	415	200
4P	140	165	82.5	340	165	160	415	200

More dimensions for DPX³ 250 HP
see technical sheets

DPX³ 125, 160 and 250 HP

technical characteristics (continued)

Technical characteristics (at 40 °C and 50 °C)

MCCBs		DPX ³ 125 HP thermal magnetic				DPX ³ 125 HP thermal magnetic with electronic earth leakage module		DPX ³ 160 HP thermal magnetic				DPX ³ 160 HP thermal magnetic with electronic earth leakage module	
		36 kA	50 kA	70 kA	100 kA	36 kA	50 kA	36 kA	50 kA	70 kA	100 kA	36 kA	50 kA
Nominal rating In (A)		16-20-25-32-40 50-63-80-100-125				16-20-25-32-40 50-63-80-100-125		160				160	
Rated insulation voltage Ui (V)		800				500		800				500	
Rated operational voltage Ue (V)		690				500		690				500	
Rated impulse withstand current Uimp (kV)		8				6		8				6	
Category of use		A				A		A				A	
IEC 60947-2	220/240 V~	70	90	100	150	70	90	70	90	100	150	70	90
	380/415 V~	36	50	70	100	36	50	36	50	70	100	36	50
	440/460 V~	20	25	35	40	20	25	20	25	35	40	20	25
	480/500 V~	12	16	20	25	12	16	12	16	20	25	12	16
	550 V~	8	10	16	18	-	-	8	10	16	18	-	-
	690 V~	5	6	10	12	-	-	5	6	10	12	-	-
	Standard breaking capacity Ics (% Icu)	100	100	100	100	100	100	100	100	100	100	100	100
Short-circuit making capacity Icm (kA)		415 V~	76.5	105	154	220	76.5	105	154	220	76.5	105	154

MCCBs		DPX³ 250 HP thermal magnetic				DPX³ 250 HP thermal magnetic with electronic earth leakage module		
		36 kA	50kA	70 kA	100 kA	36 kA	50 kA	
Rated current In (A)		16-20-25-32-40-50-63-80-100-125-160-200-250				16-20-25-32-40-50-63-80-100-125-160-200-250		
Rated insulation voltage Ui (V)		800				500		
Rated operational voltage Ue (V)		690				500		
Rated impulse withstand current Uimp (kV)		8				6		
Category of use		A				A		
IEC 60947-2	Ultimate breaking capacity (kA) in AC	220/240 V~	70	90	100	150	70	90
		380/415 V~	36	50	70	100	36	50
		440/460 V~	25	30	40	50	25	30
		480/500 V~	16	18	30	35	16	18
		550 V~	10	12	22	25	-	-
		690 V~	7	8	20	22	-	-
		Standard breaking capacity Ics (% Icu)	100	100	100	100	100	100
	Short-circuit making capacity Icm (kA)	415 V~	76.5	105	154	220	76.5	105

MCCBs		DPX ³ 250 HP electronic release				DPX ³ 250 HP electronic release with electronic earth leakage module		
		36 kA	50kA	70 kA	100 kA	36 kA	50kA	
Rated current In (A)		40-100-160-250				40-100-160-250		
Rated insulation voltage Ui (V)		800				500		
Rated operational voltage Ue (V)		690				500		
Rated impulse withstand current Uimp (kV)		8				6		
Category of use		A				A		
IEC 60947-2	Ultimate breaking capacity (kA) in AC	220/240 V~	70	90	100	150	70	90
		380/415 V~	36	50	70	100	36	50
		440/460 V~	25	30	40	50	25	30
		480/500 V~	16	18	30	35	16	18
		550 V~	10	12	22	25	-	-
		690 V~	7	8	20	22	-	-
		Standard breaking capacity Ics (% Icu)	100	100	100	100	100	100
		Short-circuit making capacity Icm (kA)	415 V~	76.5	105	154	220	76.5

Adjustment for thermal-magnetic DPX3 125, 160 and 250 HP

Setting		DPX ³ thermal magnetic	DPX ³ with integrated e.l.c.bs
Ir overload trip threshold (thermal)		0.8 - 0.9 - 1 x In	
Im short-circuit trip threshold (magnetic)	DPX ³ 125 HP	fixed at 400 A for In from 16 A to 40 A fixed at 10 x In for In ≥ 50 A	
	DPX ³ 250 HP	Adjustable: fixed at 400 A for In ≤ 40 A from 6.5 to 13 x In for In = 50 A from 5 to 10 x In for In ≥ 50 A	
I _{Δn} (A)		-	0.03 - 0.3 - 1 - 3
Δt (s)		-	0 - 0.3 - 1 - 3

Adjustment for DPX3 250 HP electronic release

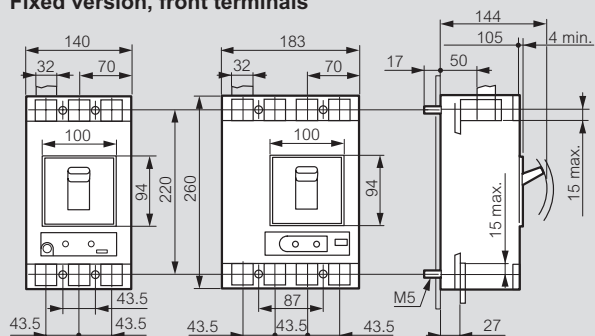
Setting	DPX ³ S1	DPX ³ S1 with integrated e.l.c.bs	DPX ³ S10	DPX ³ S10 with integrated e.l.c.bs
Ir overload trip threshold (long delay)	0.4 to 1 x In		0.2 to 1 x In - OFF (step 1 A)	
tr	5 s		3 to 15 s (step 40 ms via software/app)	
I _{Δn} (A)	-	0.03 - 0.03 - 1 - 3	-	0.03 - 0.3 - 1 - 3
Δt (s)	-	0 - 0.3 - 1 - 3	-	0 - 0.3 - 1 - 3
I _{sd} short-circuit trip threshold (short delay)	1.5 - 2 - 2.5 - 3 - 4 - 5 - 6 - 7 - 8 - 9 - 10 x Ir		1.5 x Ir to 10 x In - OFF (step 1 A via software / app)	
tsd (t=k, I _t =k) short delay trip time	0.1 s		40 to 480 ms (step 40 ms via software / app)	
Ii instantaneous protection (t=k)	-		2 to 15 x In - OFF, (step 1 A via software / app)	
Ig	-		0.2 to 1 x In - OFF (step 0.1 x In)	
tg (t=k, I _t =k)	-		80 ms to 1 s (step 40 ms)	

Functioning in particular conditions (temperature and altitude derating)
see technical sheets

DPX³ HP tripping curves
see technical sheets

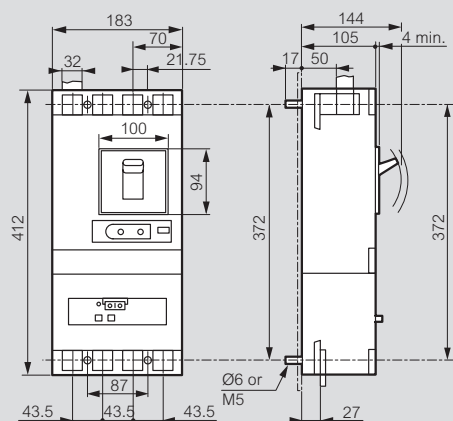
Dimensions

Fixed version, front terminals

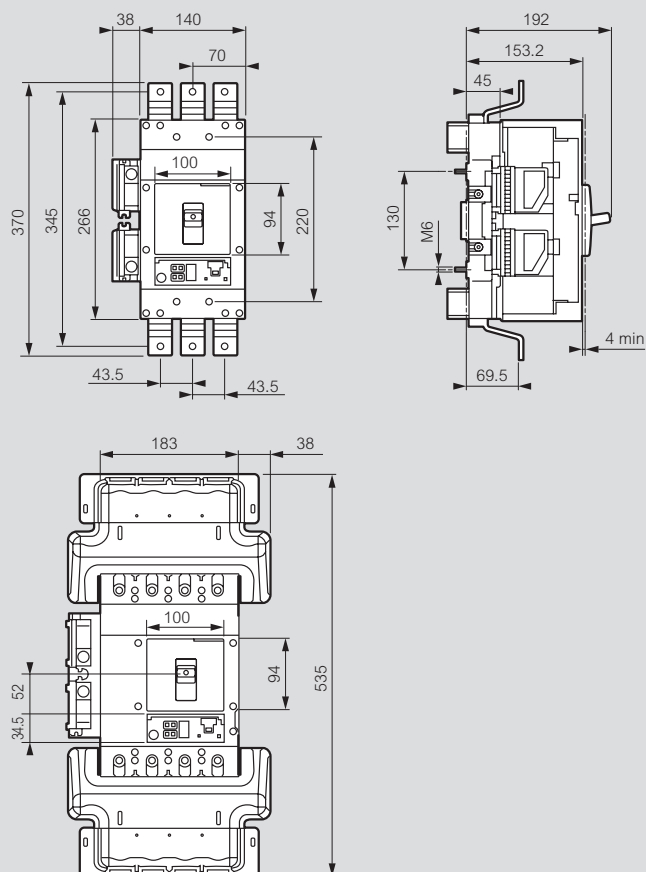


Fixed version with earth leakage module mounted underneath

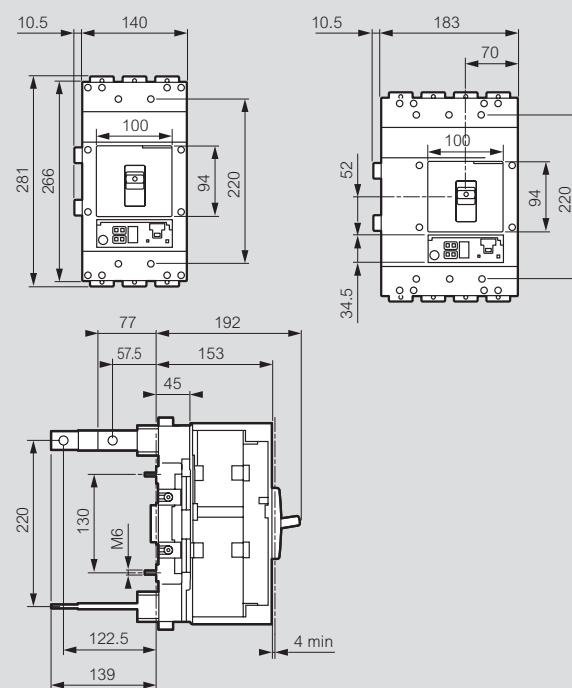
Front terminals



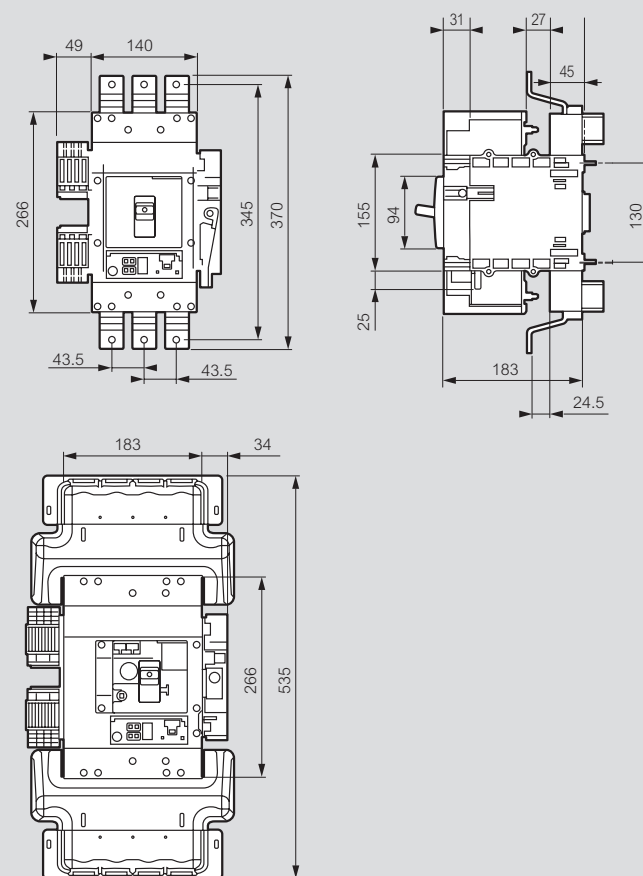
Plug-in version, front terminals



Plug-in version, rear terminals

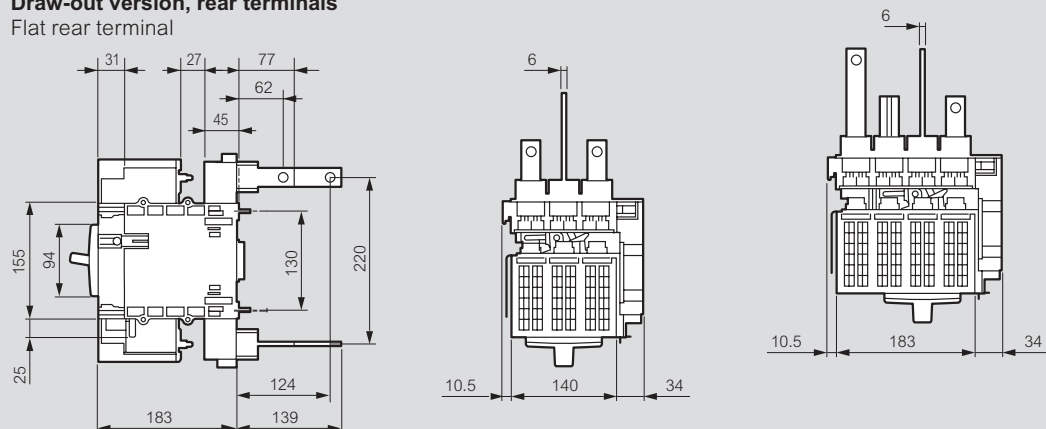


Draw-out version, front terminals



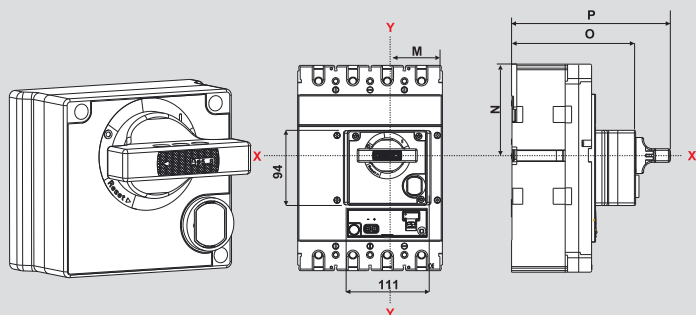
Draw-out version, rear terminals

Flat rear terminal



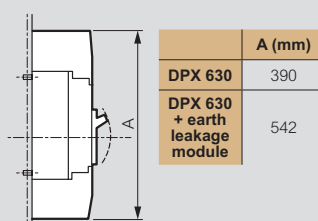
Rotary Handle Direct- DPX³ 630

	DPX³ 630 HP
Direct Handle	4 201 62
Direct Emergency Handle	4 201 75



Dimensions	DPX ³ 630
Cat Ref	4 201 62, 4 201 75
M	69.5
N	114.2
O	155
P	198.4

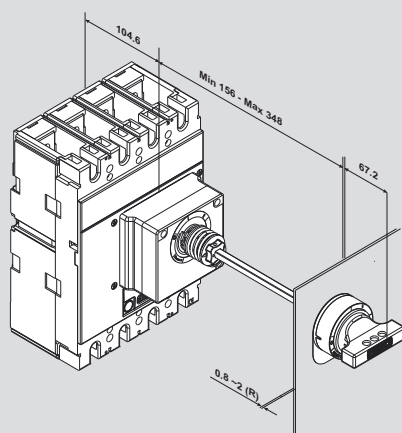
Terminal shields



	A (mm)
DPX 630	390
DPX 630 + earth leakage module	542

Vary Depth Handle DPX³ 630

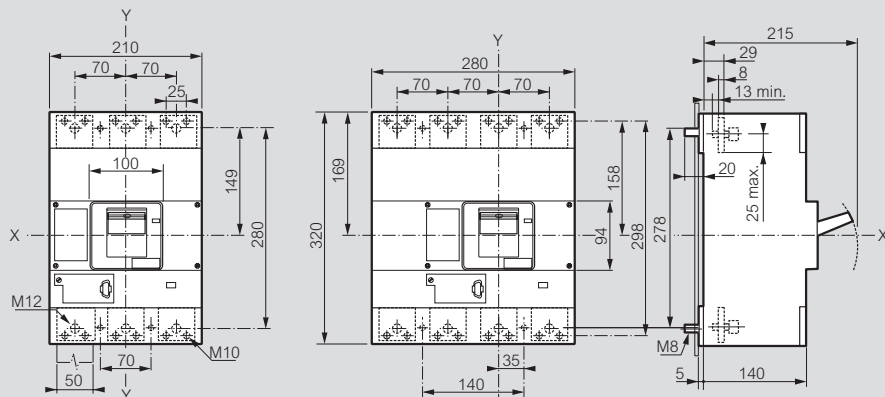
IP 54



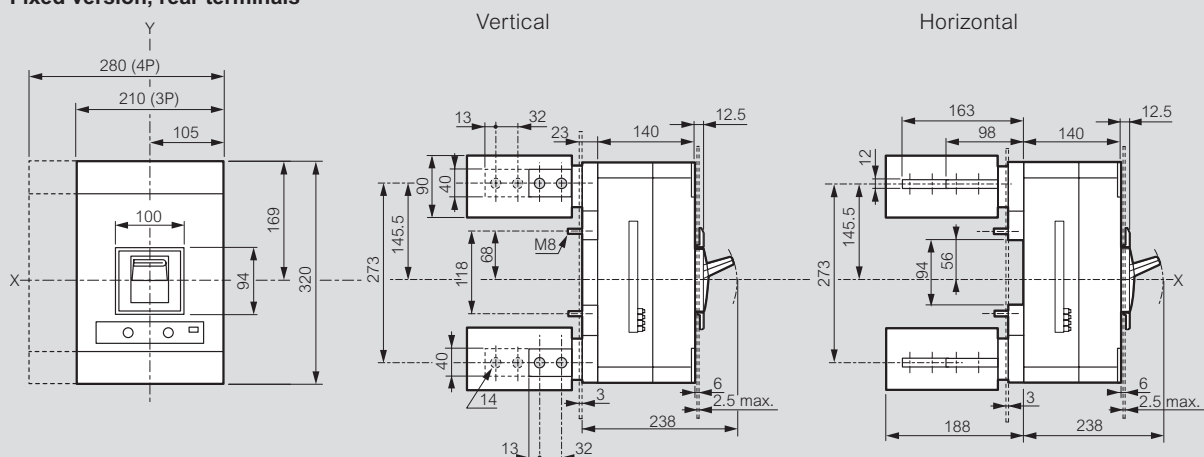
	DPX³ 125 HP
Vary Depth Handle	4 201 63
Vary Depth Emergency Handle	4 201 76

Dimensions

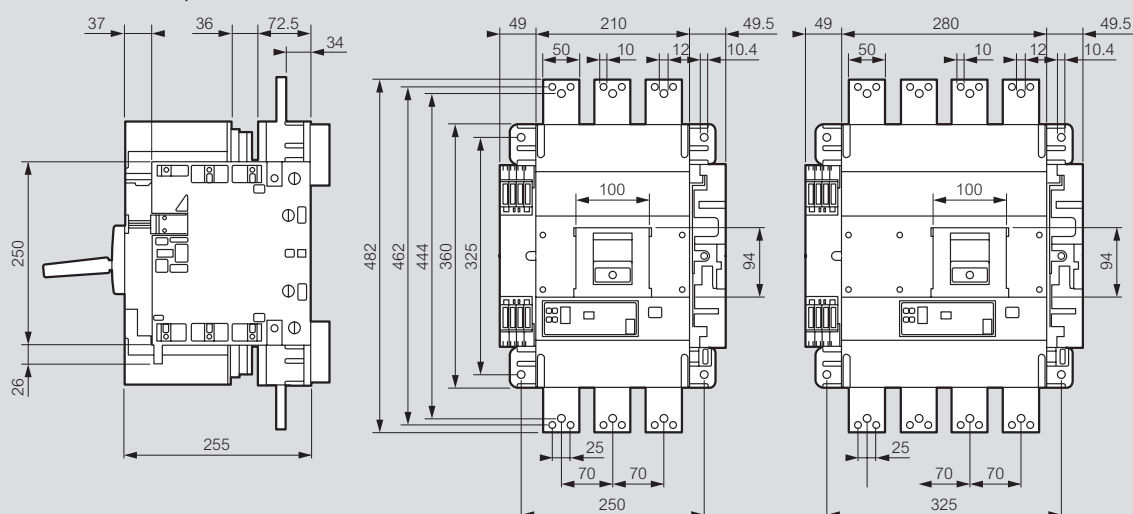
Fixed version, front terminals



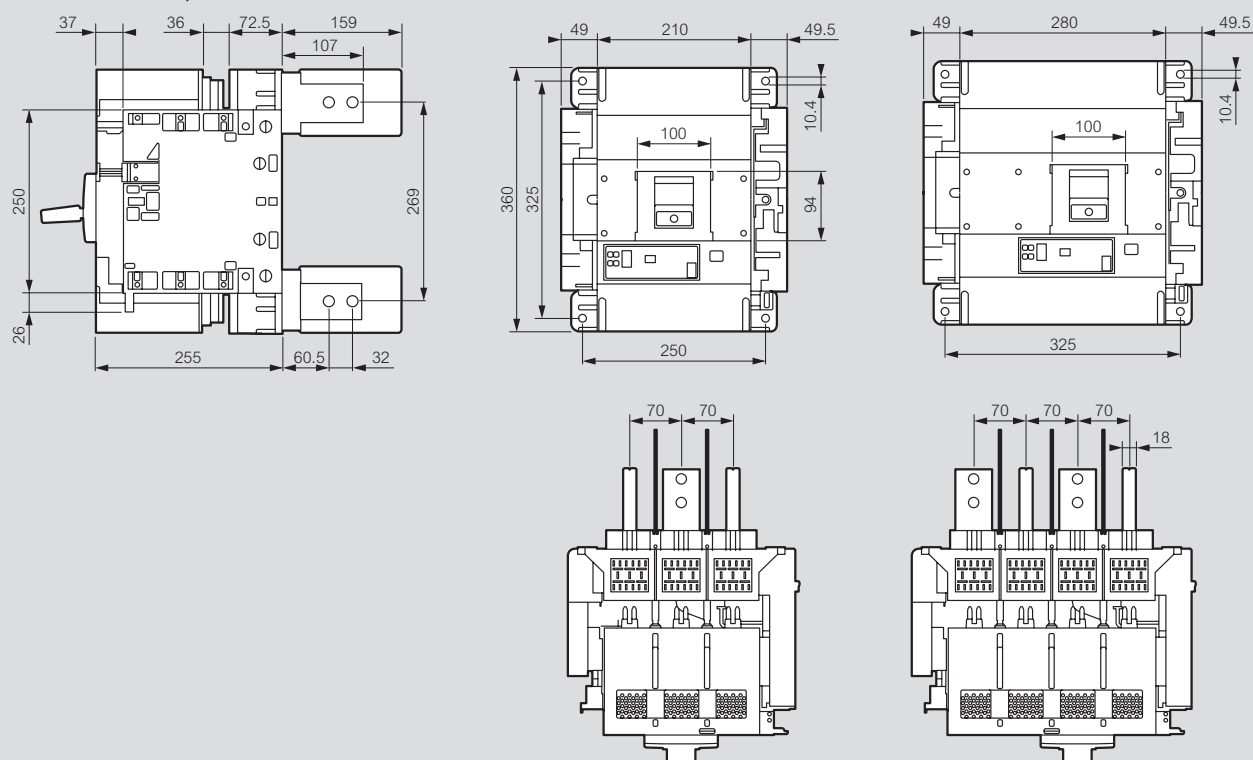
Fixed version, rear terminals



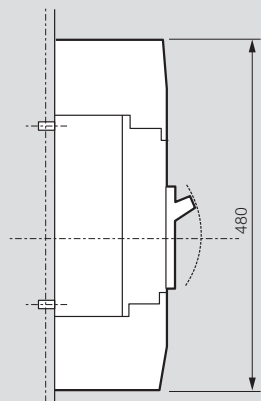
Draw-out version, front terminals



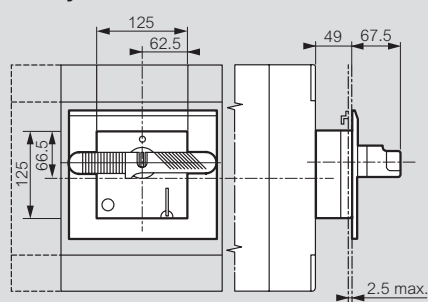
Draw-out version, rear terminals



Terminal shields

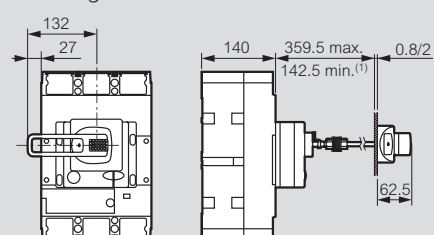


Rotary handle-direct on DPX³



Rotary vari-depth handle on door

Mounting with flexible seal



1: 75 mm without mechanical system

DPX³ 250 HP/630/1600

Reading and Adjustment of Thermal and Electronics settings

Adjustment for thermal-magnetic DPX³

Threshold Setting	DPX ³ 630	DPX ³ 1600
I _r overload trip threshold (thermal)	0.8 to 1 I _n	0.8 to 1 I _n
I _m short-circuit trip threshold (magnetic)	5 to 10 I _n	5 to 10 I _n

Adjustment for DPX³ electronic release

Threshold Setting	S1
I _r long delay setting current (protection against overloads)	$I_r = 0.4 \div 1 \times I_n$ (with 2 selectors of 10 steps)
t _r long delay protection operation time	t _r = 5 s (with memory ON)
I _{sd} short delay setting current (protection against short-circuits)	$I_{sd} = 1.5 \div 10 I_r$ (with 10 steps)
t _{sd} (t=k, I ² t=k) short delay protection operation time	t _{sd} = 100 ms

Adjustment for DPX³ electronic release

Threshold Setting	S10	
	Directly on the MCCB	Via software/App.
I _r long delay setting current (protection against overloads)	0.2 to 1 x I _n / step 1 A	0.2 to 1 x I _n - OFF / step 1 A
t _r long delay protection operation time	3 to 30 s	3 to 30 s / step 40 ms
I _{sd} short delay setting current (protection against short-circuits)	1.5 to 3 x I _r / step 0.5 x I _r 3 to 10 x I _r / step I _r	1.5 x I _r to 10 x I _n - OFF / step 1 A
t _{sd} (t=k, I ² t=k) short delay protection operation time	40 to 480 ms	40 to 480 ms / step 40 ms
I _i (t=k) instantaneous protection	-	2 to 15 x I _n - OFF / step 1 A
I _g	0.2 to 1 x I _n / step 0.1 x I _n	0.2 to 1 x I _n - OFF / step 0.1 x I _n
t _g (t=k, I ² t=k)	80 to 480 ms and 1 s	80 ms to 1 s / step 40 ms

There are several ways to configure the various settings: directly on the protection units (using the +/- and >/< buttons on the front face), on a PC with Power Control Station software installed, or on a tablet or smartphone via the EnerUp+ Project app. Power Control Station software for PC and the EnerUp+ Project app for smartphone/tablet can be used to exchange data with the DPX³ S10 protection unit. The software and app can be used to:

- Monitor the status of the circuit breaker
- Display information (firmware and device versions, alarms, measurements, parameters, fault log, settings)
- Configure the different protection devices [1]
- Update the protection unit firmware [2]
- Generate reports based on the data stored and read by the protection unit [1]
- Run diagnostic tests
- Upload data linked to your profile and installation to the Cloud (with the EnerUp + Project app only)

[1] With the Power Control Station software only

[2] For Legrand technical support via the Power Control Station software only

Together with above protections, activated in case of electric faults, the trip unit also integrates self-protection for:

- Over temperature : in case the internal temperature of protection unit exceed 95°C;
- Auto diagnostics: in case embedded watchdog circuit detects internal malfunctions, which could compromise the correct working of microcontroller.

DERATINGS

according to IEC/EN 60947-1

Temperature

Rated current and its adjustment has to be considered relating to a rise or fall of ambient temperature and to a different version or installation conditions. The table below indicates the maximum long-time (LT) protection setting depending on the ambient temperature.

Temperature Deration(°C)

DPX³ 125/160HP

Range	In (A)	-20°C	-10°C	-5°C	0°C	10°C	20°C	30°C	40°C	50°C	60°C	70°C
DPX ³ 125 HP	16	20	20	19	19	18	17	17	16	16	15	14
	20	25	24	24	23	23	21	21	20	20	18	17
	25	31	30	30	29	28	27	26	25	25	23	22
	32	40	39	38	37	36	35	33	32	32	29	28
	40	50	49	48	47	45	43	42	40	40	37	35
	50	62	61	59	58	56	54	52	50	50	45	43
	63	79	77	75	74	71	68	65	63	63	57	54
	80	100	97	95	93	90	86	83	80	80	73	69
	100	125	121	119	117	112	108	104	100	100	91	86
	125	157	151	148	146	140	135	130	125	125	114	108
DPX ³ 160 HP	160	201	193	189	187	179	173	166	160	160	146	138

DPX³ 250HP

Range	In (A)	-20°C	-10°C	-5°C	0°C	10°C	20°C	30°C	40°C	50°C	60°C	70°C
DPX ³ 250 HP	16	23	22	21	21	20	18	17	16	16	14	14
	20	29	27	26	26	24	23	21	20	20	18	17
	25	36	34	33	32	30	29	27	25	25	23	21
	32	46	44	42	41	39	37	34	32	32	29	27
	40	57	54	53	52	49	46	43	40	40	36	34
	50	72	68	66	64	61	57	54	50	50	45	43
	63	90	86	83	81	77	72	68	63	63	57	54
	80	114	109	106	103	98	92	86	80	80	72	68
	100	143	136	132	129	122	115	107	100	100	90	85
	125	179	170	166	161	152	143	134	125	125	113	106
	160	229	218	212	206	195	184	172	160	160	144	136
	200	286	272	265	258	244	230	215	200	200	180	170
	250	358	340	331	332	305	287	269	250	250	225	213

DPX³ 630

Range	In (A)	10°C	20°C	30°C	40°C	50°C	60°C	70°C
DPX ³ 630	250	336	307	279	250	250	222	193
	320	416	384	352	320	320	288	256
	400	475	460	425	400	400	360	320
	500	600	550	535	500	500	455	410
	630	700	683	650	630	630	580	530

DPX³ 1600

Range	In (A)	10°C	20°C	30°C	40°C	50°C	60°C	70°C
DPX ³ 1600	630	630	630	630	630	630	630	630
	800	800	800	800	800	800	800	720
	1000	1000	1000	1000	1000	1000	1000	900
	1250	1250	1250	1250	1250	1250	1250	938
	1600	1600	1600	1600	1600	1600	1600	1360

Altitude Deration(°C)

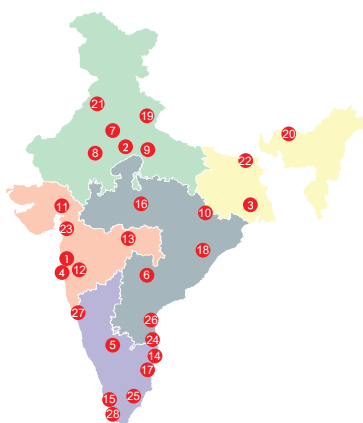
Altitude derating for DPX³ and DPX³-I MCCBs

Range	Altitude (m)	2000	3000	4000	5000
DPX ³ 125HP, 160HP, 250HP, 630, 1600	Ue (V)	690	590	520	460
	In (A) (Ta = 40°C/50°C)	1 x In	0.98 x In	0.93 x In	0.9 x In

Notes

[illegible]

Notes



Head offices

1. 61 & 62, 6th Floor,
Kalpataru Square, Kondivita Road,
Off Andheri-Kurla Road, Andheri (E),
MUMBAI – 400 059.
Tel.: (022) 3041 6200
Fax : (022) 3041 6201
Website : www.legrand.co.in

Regional sales offices

2. B-225, 4th Floor, Okhla Industrial
Area, Phase -1,
NEW DELHI – 110020.
Tel.: (011) 3990 2200
Fax : (011) 2699 0047 [INNOVAL](#)
3. Unit no 1203, Ambuja Neotia
EcoCentre, Street No. 13, EM Block,
Sector V, Bidhannagar, Ambuja
Neotia EcoCentre,
KOLKATA – 700 091.
Tel.: (033) 4021 3535 [INNOVAL](#)
4. C/203, Corporate Avenue, Atul Projects,
Near Mirador Hotel, Chakala,
Andheri - Ghatkopar Link Road,
Andheri – (E), **MUMBAI** – 400 099.
Tel.: (022) 6230 1000 [INNOVAL](#)
5. Ferozes Manor, Situated at 58
Hospital Road, Shivaji Nagar,
BANGALORE – 560 001.
Tel.: (080) 80682 20000 [DC INNOVAL](#) [INNOVAL](#)
6. Prestige Phoenix, 1st Floor,
Next to Lifestyle Building,
Begumpet, **HYDERABAD**,
Telangana - 500 016. [INNOVAL](#)
Tel.: (040) 4567 1717

Technical assistance from Legrand

Telephonic technical assistance for selection of products, technical information, guidance, wiring diagrams and estimation is now made available to you at each Regional Office. Contact the Technical Officer of Legrand at the following telephone numbers

New Delhi : Tel.: (011) 3990 2200
Kolkata : Tel.: (033) 4021 3535
Mumbai : Tel.: (022) 6230 1000
Chennai : Tel.: (044) 6612 2800
Hyderabad : Tel.: (040) 4567 1717

For other places, contact the nearest
Regional / Branch / Area offices

customer.care@legrand.co.in

Branch offices

7. Unit No. 203, Tower B Bestech
Business Towers, Sector-66, Mohali,
CHANDIGARH – 160 017.
Tel.: (0172) 5019 008 [INNOVAL](#)
8. Building No-128, Mansarovar Link Road,
Gopalpura Bypass, Mohan Nagar,
Near Ridhi Sidhi Flyover, **JAIPUR** – 302018.
Tel.: 0141-2208665 [INNOVAL](#)
9. 209-A, 2nd Floor, Cyber Heights,
Opp. Indira Gandhi Pratishthan,
Vibhuti Khand, Gomti Nagar,
LUCKNOW – 226 010.
Tel.: (0522) 431 9316 [INNOVAL](#)
10. 202 & 203, Sunrise, Forum 100,
Burdwan Compound, Lalpur,
RANCHI – 834 001.
Tel.: (651) 660 5400
11. A 101-102, Mondeal Heights,
Besides Novotel Hotel, Sarkhej
Gandhinagar Highway (S G Highway),
AHMEDABAD – 380 015.
Tel.: (079) 6134 0555 [INNOVAL](#)
12. 8th Floor, Pinnacle Park Avenue,
Opp. Law College, Law College Road
Next To German Bakery,
Shivaji Nagar, **PUNE** – 411004.
Tel.: (020) 6729 5601 / 600 [INNOVAL](#)
13. Plot No.95, 2nd Floor, Shreyash
Heights, VIP Road, Ramdaspath,
NAGPUR – 440 010.
Tel.: (0712) 2440 900
14. 10 B, Prestige Center Court, Office Block,
Vijaya Forum Mall, #183, N.S.K. Salai,
Vadapalani, **CHENNAI** – 600 026.
Tel.: (044) 6612 2800 [INNOVAL](#)
15. J. B. Manjooran Estate,
Door No. 50/1107 A9, 3rd Floor,
Bye Pass Junction, Edappally,
COCHIN – 682 024.
Tel.: (0484) 6604 700 [INNOVAL](#)
16. 204-205, Megapolis Square,
579, M G Road,
INDORE – 452 001.
Tel.: (0731) 4999 891
17. MF-2, Datta's Lords House,
Jammi Chettu Street, Mogalrajapuram,
VIJAYAWADA – 520 010.
Tel.: (0866) 248 2393/6393
18. Plot No. 359, Saheed Nagar,
2nd Floor,
BHUBANESWAR – 751 007.
Tel.: (0674) 254 0623
19. Unit - 1 & 2, Vijay Park,
Main Chakrata Road,
DEHRADUN – 248 001.
Uttarakhand.
Tel.: (0135) 661 6100. [INNOVAL](#)
20. 509, Sri Kamakhya Tower, G.S.
Road, Christian Basti,
GUWAHATI – 781005. [INNOVAL](#)
Tel.: +91 89295 77590
21. SCO 50-51, 2nd Floor Lodhi Club
Road Shaheed Bhagat Singh
Nagar, **LUDHIANA** – 141 013.
Tel.: (0161) 277 0301 [INNOVAL](#)
22. 94, Udhm Singh Sarani,
Ground Floor, Ashrampara,
SILIGURI – 734 001.
Tel.: (353) 264 1067
23. A-207, Universal Business
Center, Near Madhuvan Circle,
L.P. Savani Road, Adajan,
SURAT – 395 009.
Tel.: (0261) 263 3861 [INNOVAL](#)
24. Aparna Towers, 1st Floor, 2/3,
Bypass Road,
MADURAI – 625 010.
Telefax : (0452) 230 8414
25. 43-9-205, 3rd Floor, Plot No. 10,
Subbalakshmi Nagar,
Opp. More Super Market,
VISAKHAPATNAM – 530 016.
Tel.: (0891) 273 5652 / 2739363 [INNOVAL](#)
26. B-5, 1st Floor, Thirumalai Towers,
723, Avanashi Road,
COIMBATORE – 641 018.
Tel.: (0422) 668 3200. [INNOVAL](#)
27. 515 & 516, Gera Imperium Grand,
Patto centre,
Panaji **GOA** – 403 001. [INNOVAL](#)
28. 1st Floor, Cordial Bharathi,
Nanthancodu, **THIRUVANTHAPURAM**,
KERALA- 695 003. [INNOVAL](#)

